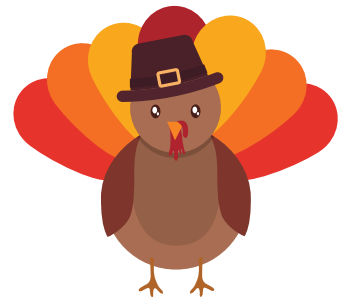


MONTHLY NEWSLETTER

HANSON COMMUNITY CENTER

COMMUNITY GIVING • NOVEMBER 2024



WELCOME

CENTER STAFF

CONTACT US

THIS MONTH'S HIGHLIGHTS



SCAN ME TO REGISTER FOR PROGRAMS, JOIN OUR EMAIL LIST, AND CONNECT WITH US ONLINE!



Charles County Department of Recreation, Parks, and Tourism
8190 Port Tobacco Road, Port Tobacco, MD 20677
301-932-3470 • MD Relay Service: 7-1-1 (TDD: 1-800-735-2258) • www.CharlesCountyParks.com

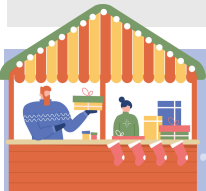


Equal Opportunity Employer

OUR NOVEMBER ACTIVITIES

CALENDAR KEY

SUN	MON	TUE	WED	THU	FRI	SAT
27	28	29	30	31	1	2
3	4	5	6	7	8	9
10	11	12	13	14	15	16
17	18	19	20	21	22	23
24	25	26	27	28	29	30



Winter Holiday Market

Saturday, November 23 • 10 a.m. - 2 p.m.
Billingsley Community Center • Free to shop!

Learn more at:
CharlesCountyParks.com