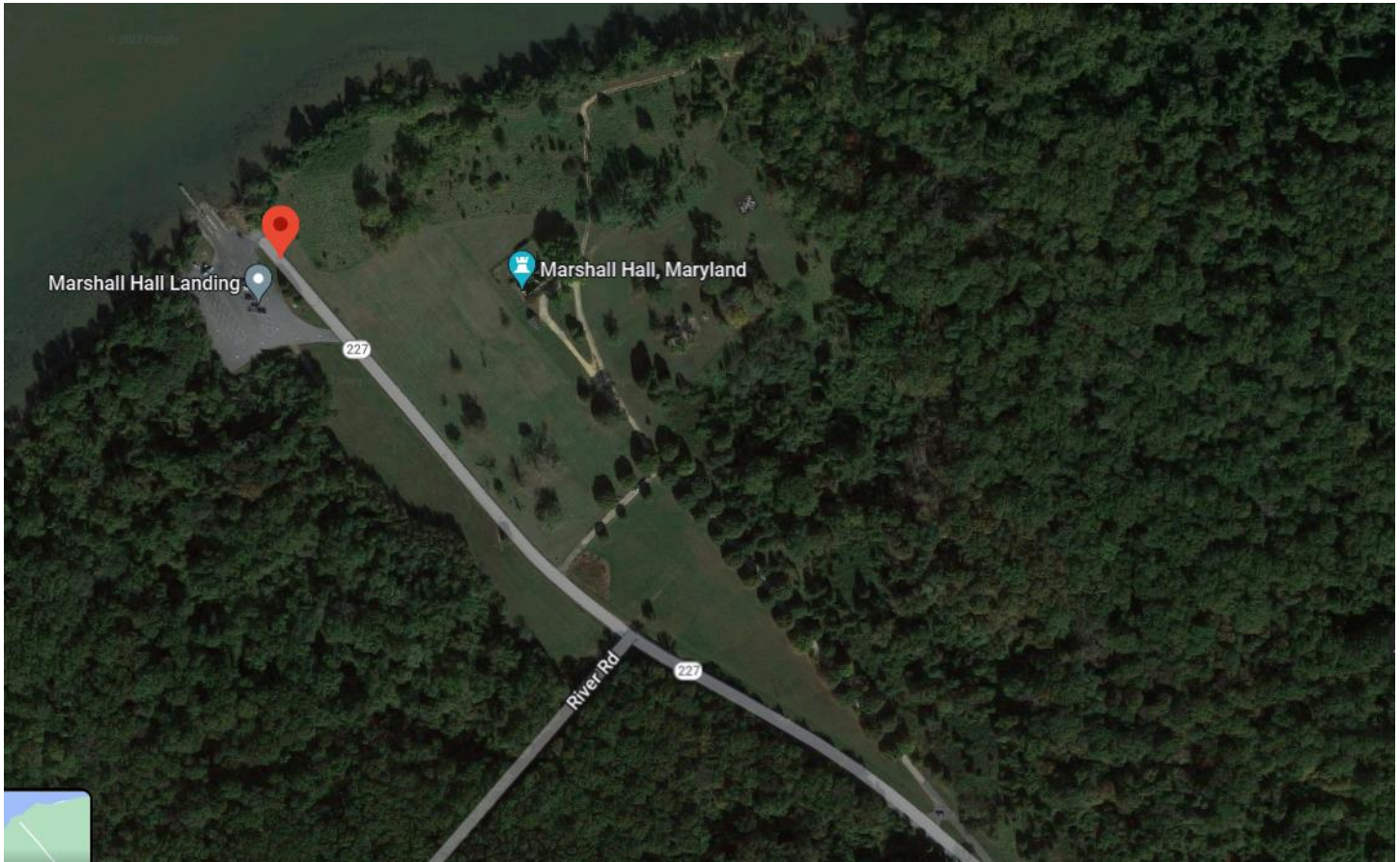




Marshall Hall Riverfront Access in Piscataway National Park, north of the boat ramp, has become an unplanned, unprotected public place. The abandonment of care means two things are possible – a public destination giving enduring public enjoyment, or neglect leading to ongoing deterioration.



Visitor Services at Marshall Hall need to be improved. Marshall Halls best use is as a destination for families of the County and as part of the Chesapeake Bay public access program. Restoring the pavilion and providing bathroom facilities and a trail network will be a significant step toward providing a higher quality public access.



The green areas of this map show Piscataway National Park. The Park is effectively extended by private lands with conservation easements, mostly in the Moyaone Reserve, which is mostly in Prince Georges County, but partly in Bryans Road. The Moyaone Reserve landowners in Prince Georges County get federal tax credits, but those in Charles County do not. Prince Georges County landowners get the benefit of federal investment at Accokeek Creek Site, of a sort that maintains and increases the value of their property. But their Charles County counterparts have not received the same quality of investment at Marshall Hall. The solution? Charles County should negotiate with the National Park Service to upgrade visitor services at Marshall Hall.

O
n
e

p
a
r
t

o
f