

# SUMMARY OF WATER & SEWER PLAN AMENDMENTS SPRING 2022 CYCLE

Applications for amendments to the Comprehensive Water and Sewer Plan are reviewed on a semi-annual basis, with application deadlines in February and August. The Department of Planning & Growth Management received 1 application for amendments prior to the February 2022 deadline. The application was a request from:

- Whitman, Requardt and Associates, LLP on behalf of St. Charles Community, LLC regarding the to-be-developed Horizon neighborhood in St. Charles. The application request changes to the sewer and water categories for the subject parcel along the north side of MD 488 (La Plata Rd) and the requested changes are from water categories W-5 to W-3DEV and from sewer categories S-5 to S-3DEV.

## DESCRIPTION OF WATER/SEWER CATEGORIES

**W1/S1:** Existing central system, areas which are in the final planning stages, and/or have received final plat approval

**W3/S3:** Area where central service is under design or approved to be designed

**W5/S5:** Within designated service area

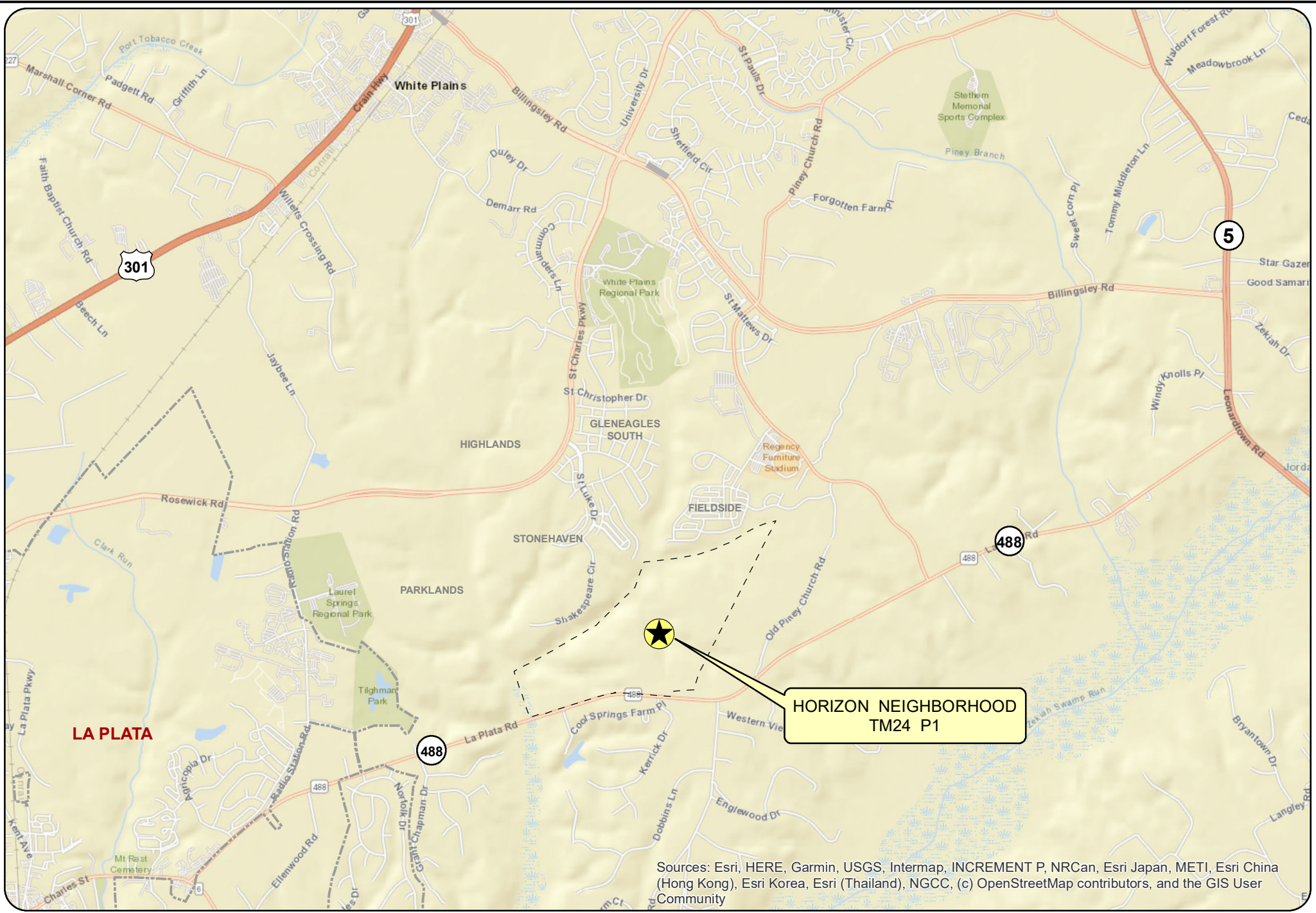
**W6/S6:** No planned service

**COND:** Service is conditional on commissioner enumerated conditions only

**DEV:** Proposed service is contingent upon developer action

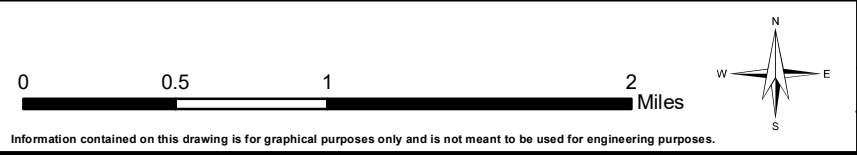
**E:** When shown following prioritization numbers (e.g. 3E), identifies those areas designated as areas with existing problems by the Maryland State Department of Health


**WCD:** Outside designated service areas – no planned service within Watershed Conservation District



**HORIZON NEIGHBORHOOD  
TM24 P1**

Sources: Esri, HERE, Garmin, USGS, Intermap, INCREMENT P, NRCAn, Esri Japan, METI, Esri China (Hong Kong), Esri Korea, Esri (Thailand), NGCC, (c) OpenStreetMap contributors, and the GIS User Community



SCALE	 <b>CHARLES COUNTY GOVERNMENT</b> Department of Planning and Growth Management 200 Baltimore St La Plata, MD 20646 (301)645-0627	DATE
DRAWN BY:		JUNE 2022
CHECKED BY:		

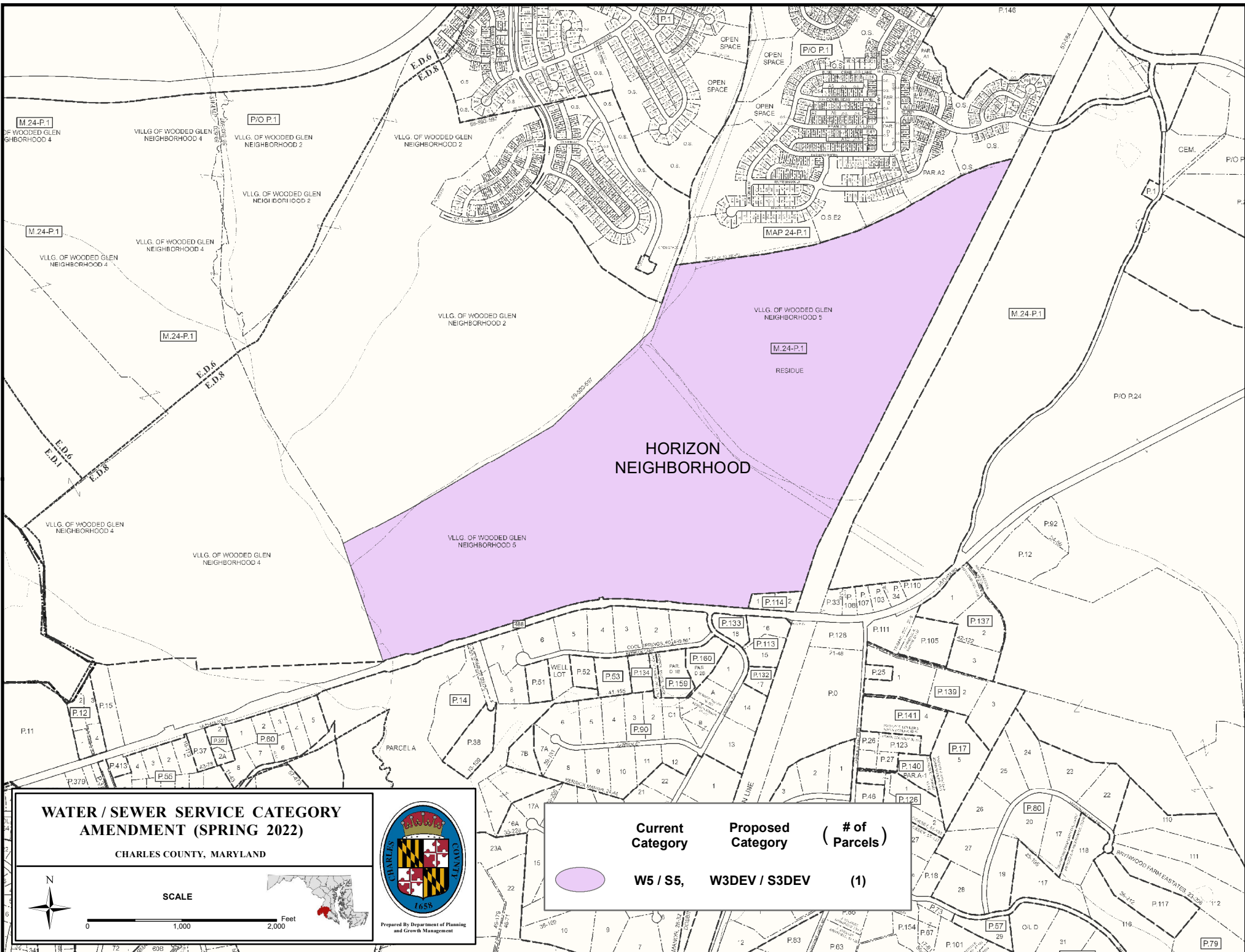
**Spring 2022 Water & Sewer Plan Amendment Application**

**HORIZON NEIGHBORHOOD**

**LOCATION MAP**

CHARLES COUNTY, MD

Information contained on this drawing is for graphical purposes only and is not meant to be used for engineering purposes.



**WATER / SEWER SERVICE CATEGORY  
AMENDMENT (SPRING 2022)**

CHARLES COUNTY, MARYLAND



Prepared By Department of Planning  
and Growth Management

Current Category	Proposed Category	(# of Parcels)
W5 / S5	W3DEV / S3DEV	(1)



SCALE

0 1,000 2,000 Feet

