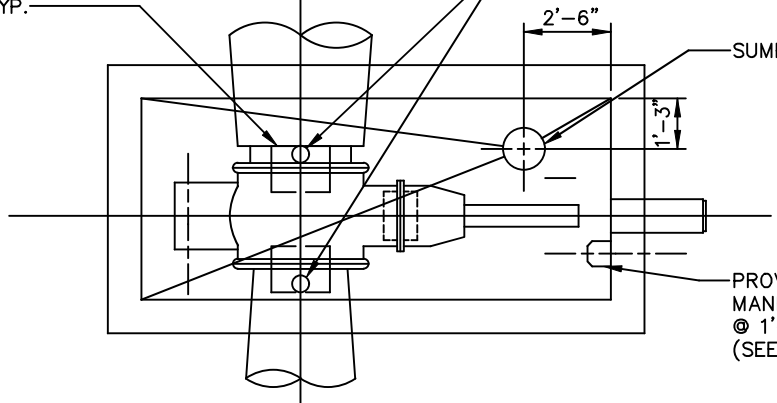


SOLID MASONRY OR
CONCRETE PEIRS—
1'-4"x2'-0" TYP.

2" TAP FOR MUELLER THREAD
W/ CORP. COCK.



PLAN

VALVE BOXES CENTERED
OVER VALVE OPERATING
NUT (SEE W-4.04)

REMOVABLE TOP SLAB
(SEE W-3.05)

30"x30" HATCH ON
BRICK CHIMNEY
(SEE W-4.04)

TWO LAYERS TAR
PAPER BETWEEN
WALLS & TOP SLAB
TYP.

CAST IN PLACE CONC.
VAULT (SEE W-3.05)

3'-8" LENGTH OF 12"
Ø PIPE W/STOPPER

6" MINIMUM GRANULAR
BEDDING

PROVIDE 11"x11"x3/4"
BEARING PLATES ON
1/2"± GROUT ON PIERS
TYPICAL

SUMP (SEE DETAIL W/6.12 NOTE #9)

SECTION

NOTE:

1. VAULTS FOR ELECTRICALLY OPERATED VALVES SHALL BE BUILT WATERTIGHT AND REQUIRE A SUMP PUMP AND FLOOD ALARM CONNECTED TO SCADA. SUBMIT DETAILS FOR REVIEW.
2. CONTRACTOR MAY USE PRECAST CONCRETE VAULT. SEE SPECIFICATION FOR SUBMITTAL REQUIREMENTS.



CHARLES COUNTY GOVERNMENT

DEPARTMENT OF PLANNING & GROWTH MANAGEMENT

APPROVED: Raymond N. Shumaker, Jr. Oct 5, 2022

CHIEF OF CODES, PERMITS, & INSPECTION SERVICES DATE Oct 5, 2022

J.B.M. PROFESSIONAL ENGINEER DATE

STANDARD DETAIL

VALVE INSTALLATION
FOR 16" & LARGER

W
3.04

REVISIONS:
JUNE 1995
SEPTEMBER 2022