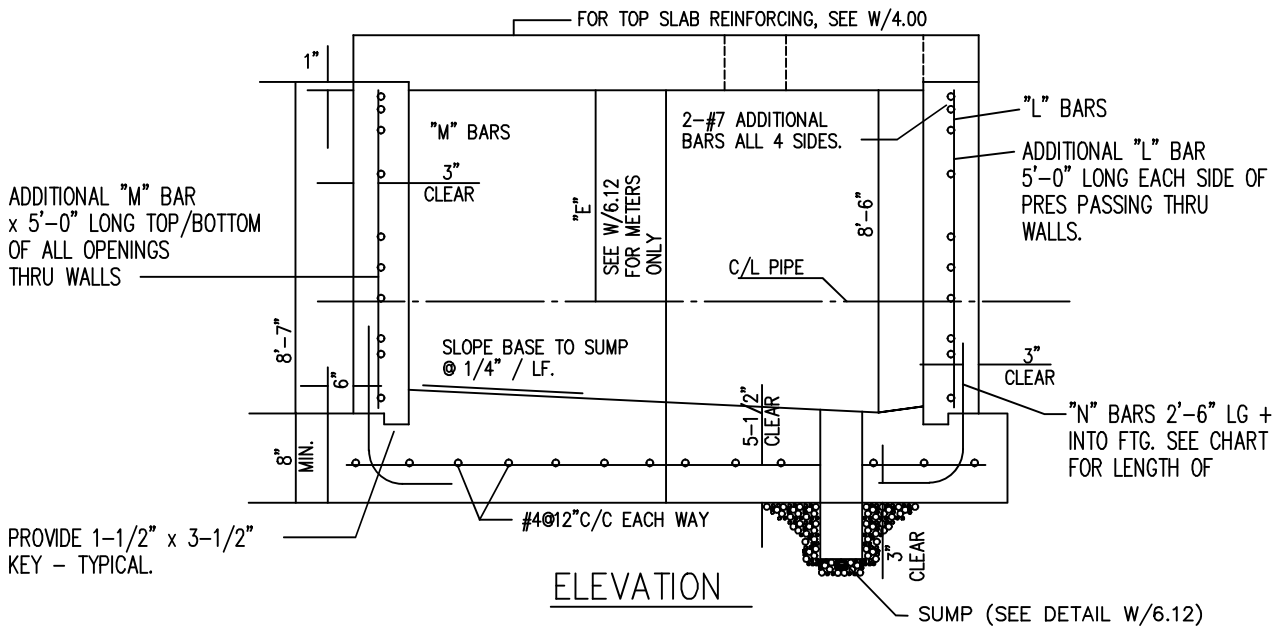


PLAN OF VAULT – TOP SLAB REMOVED



ELEVATION

"P"	"Q"	"R"	"L"	"M"	"N"
8"	6'-0"	6'-0"	#4@12"	#4@12"	#5@12" + 2'-0"HK
8"	6'-0"	8'-0"	#4@12"	#4@12"	#5@12" + 3'-0"HK
8"	6'-0"	10'-0"	#4@10"	#4@12"	#5@12" + 3'-0"HK
8"	8'-0"	8'-0"	#4@10"	#4@12"	#5@10" + 3'-0"HK
8"	8'-0"	10'-0"	#4@ 8"	#4@12"	#5@ 8" + 3'-0"HK
8"	8'-0"	12'-0"	#4@ 6"	#4@12"	#5@ 6" + 4'-0"HK

NOTES:

1. SEE W/3.05 NOTES (1) THRU (4) FOR ADDITIONAL INFORMATION.
2. SEE W/6.12 FOR METER VAULT SIZE REQUIRED AND METER INSTALLATION DETAILS.



CHARLES COUNTY GOVERNMENT

DEPARTMENT OF PLANNING & GROWTH MANAGEMENT

APPROVED: Raymond N. Shumaker, Jr. Oct 5, 2022
Raymond N. Shumaker, Jr. (Oct 5, 2022 12:20 EDT)

CHIEF OF CODES, PERMITS, & INSPECTION SERVICES DATE
Professional Engineer Signature Oct 5, 2022

PROFESSIONAL ENGINEER

DATE

STANDARD DETAIL

CAST IN PLACE
 CONCRETE VAULTS FOR
 METERS & VAULTS

W
 4.02

REVISIONS:
 JUNE 1995
 SEPTEMBER 2022