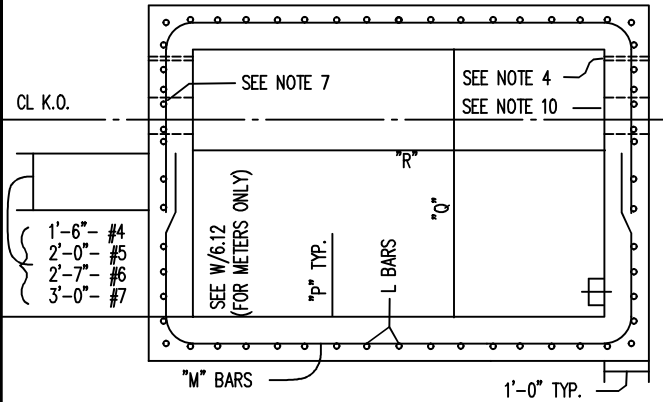
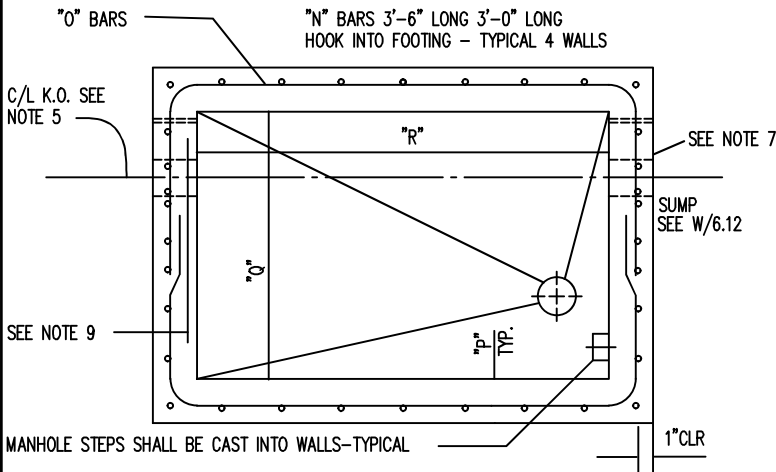


SEE NOTE



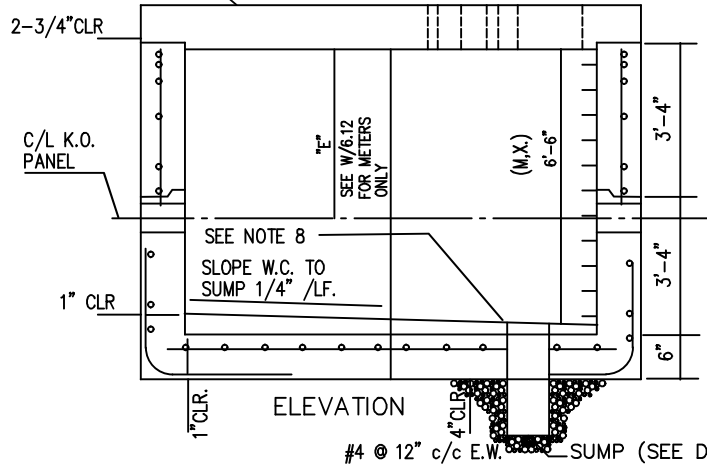
PLAN - TOP BARREL

"N" BARS 3'-6" LONG 3'-0" LONG
HOOK INTO FOOTING - TYPICAL 4 WALLS



PLAN - BOTTOM BARREL

TOP SLAB SEE W/5.02



PRECAST CONCRETE
VAULT NOTES

1. $F'_c = 5000$ PSI @ 28 DAYS
2. $f'_y = 60,000$ PSI.
3. VAULTS ARE DESIGNED FOR THE FOLLOWING CONDITION.
 - A. H₂O LOADING & 1'-0" COVER + 35% IMPACT
 - B. H₂O LL + 0% IMPACT + 5'-0" MAXIMUM EARTH COVER.
4. DRILL BYPASS HOLES IN FIELD IF REQ'D.
5. PROVIDE K.O. PANELS AT PIPE PASSING THRU WALL. NO REINFORCEMENT SHALL BE PLACED IN K.O. PANEL. MAXIMUM SIZE OF K.O. PANEL TO BE PIPE I.D. + 6" EACH SIDE.
6. PROVIDE ADDITIONAL BARS OVER K.O AS SHOWN. SIZE AND NUMBER OF ADD'L BARS TO BE SAME AS SIZE AND NUMBER OF "M" BARS DISCONTINUED DUE TO KNOCK OUT.
7. PROVIDE ADDITIONAL 2-#4 BAR VERTICAL EACH SIDE OF K.O. x 3'0" LONG IN TOP AND BOTTOM BARREL.
8. 1" MINIMUM THICK CEMENT MORTAR WEARING COURSE AT SUMP.
9. PROVIDE 2-#5 x 5'-0" LONG BELOW K.O.
10. SEE W/6.12 FOR VAULT SIZE REQUIRED AND METER INSTALLATION DETAILS.
11. ADDITIONAL BARS PROVIDED AROUND K.O. SHALL BE 1" CLEAR OF K.O.

"P"	"Q"	"R"	"L"	"M"	"N"	"O"
6"	6'-0"	6'-0"	#4@18"	#5@12"	#5@10"	#4@18"
6"	6'-0"	8'-0"	#4@18"	#5@8"	#5@10"	#4@18"
6"	6'-0"	10'-0"	#4@18"	#6@7"	#5@10"	#4@18"
6"	8'-0"	8'-0"	#4@18"	#6@9"	#5@10"	#4@18"
6"	8'-0"	10'-0"	#4@18"	#7@9"	#5@6"	#4@18"



CHARLES COUNTY GOVERNMENT

DEPARTMENT OF PLANNING & GROWTH MANAGEMENT

APPROVED: Raymond N. Shumaker, Jr. Oct 5, 2022
Raymond N. Shumaker, Jr. (Oct 5, 2022 12:20 EDT)

CHIEF OF CODES, PERMITS, & INSPECTION SERVICES DATE
Oct 5, 2022

PROFESSIONAL ENGINEER DATE

STANDARD DETAIL

PRECAST CONCRETE
VAULTS FOR METERS &
VALVES

W

4.03

REVISIONS:

JUNE 1995

SEPTEMBER 2022