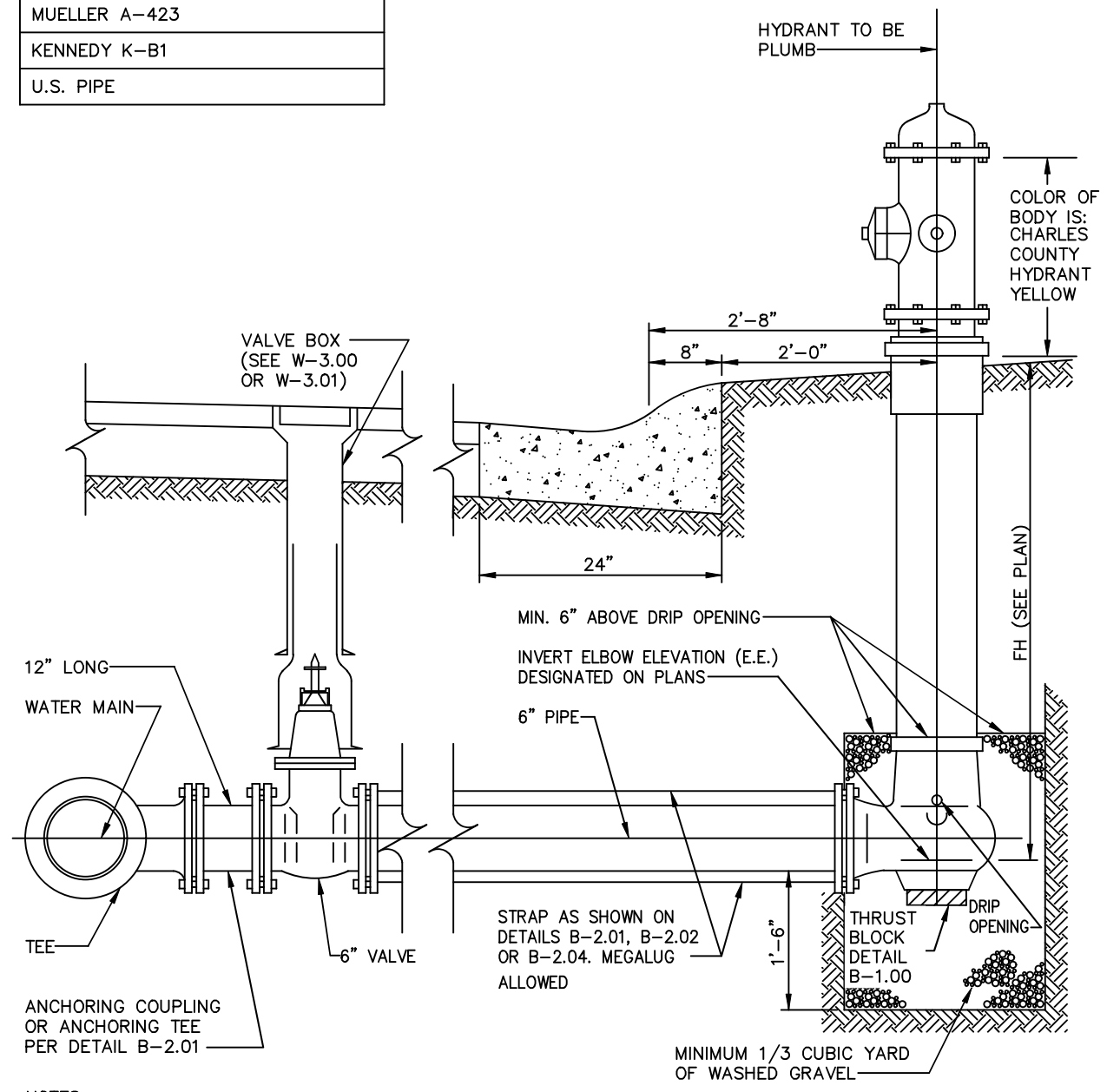


TYPE OF HYDRANT
MUELLER A-423
KENNEDY K-B1
U.S. PIPE



NOTES

1. ALL VALVES SHALL BE RESILIENT WEDGE ONLY. APPROVED VALVES ARE: U.S. PIPE METROSEAL 250-4-16 INCH, KENNEDY KEN-SEAL II - 4 12 INCH, WATEROUS SERIES 500 - 4 12 INCH AND MUELLER SERIES A-2360 - 4 12 INCH
2. IN RURAL AREAS, PLACE HYDRANTS 2 FEET OFF OF SHOULDER.
3. FIRE HYDRANT NO MORE THAN 10 FEET BEHIND CURB.
4. ALL THREAD & ASSOCIATED HARDWARE MUST BE STAINLESS STEEL.
5. ADJUST FIRE HYDRANT TO MANUFACTURER'S SUGGESTED GRADE. REFER TO DETAIL 5.00-A FOR FIRE HYDRANT ADJUSTMENT S-BEND.
6. HYDRANTS BEING PLACED IN THE SERVICE SHOULD HAVE THE REFLECTIVE WHITE TAPE AROUND THE BOTTOM.

	CHARLES COUNTY GOVERNMENT DEPARTMENT OF PLANNING & GROWTH MANAGEMENT APPROVED: <u>Raymond N. Shumaker, Jr.</u> Oct 5, 2022 <small>Raymond N. Shumaker, Jr. (Oct 5, 2022 12:20 EDT)</small> CHIEF OF CODES, PERMITS, & INSPECTION SERVICES DATE Oct 5, 2022 PROFESSIONAL ENGINEER DATE	STANDARD DETAIL FIRE HYDRANT	W <hr/> 5.00 REVISIONS: JUNE 1995 SEPTEMBER 2022