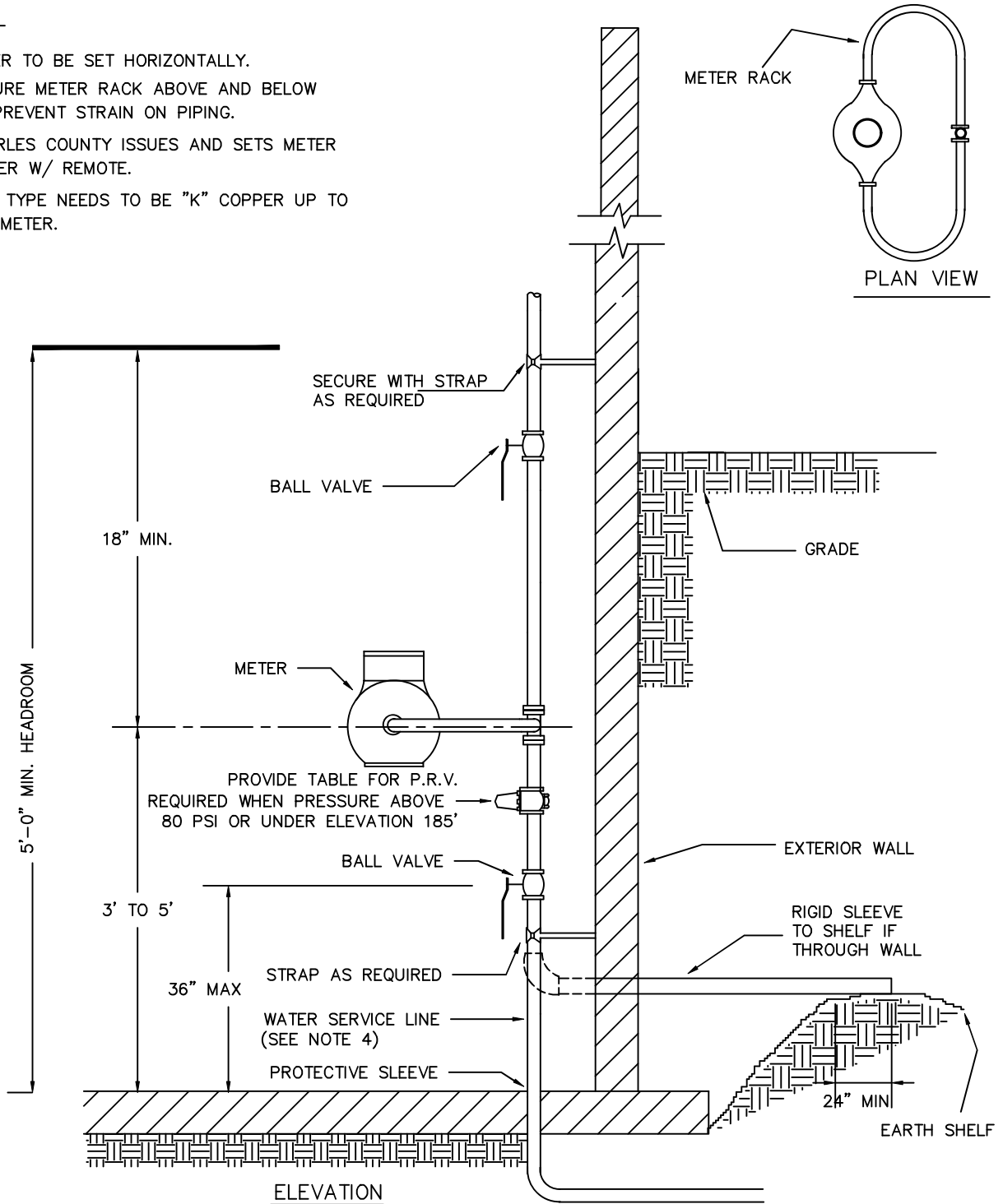


NOTES

1. METER TO BE SET HORIZONTALLY.
2. SECURE METER RACK ABOVE AND BELOW TO PREVENT STRAIN ON PIPING.
3. CHARLES COUNTY ISSUES AND SETS METER METER W/ REMOTE.
4. LINE TYPE NEEDS TO BE "K" COPPER UP TO THE METER.



CHARLES COUNTY GOVERNMENT

DEPARTMENT OF PLANNING & GROWTH MANAGEMENT

APPROVED: *Raymond N. Shumaker, Jr.* Oct 5, 2022
Raymond N. Shumaker, Jr. (Oct 5, 2022 12:20 EDT)

CHIEF OF CODES, PERMITS, & INSPECTION SERVICES DATE
H.B.M. Oct 5, 2022

PROFESSIONAL ENGINEER

DATE

STANDARD DETAIL

INSIDE WATER METER SETTING 1" AND SMALLER (EXISTING ONLY)

W
6.01

REVISIONS:
 JUNE 1995
 SEPTEMBER 2022