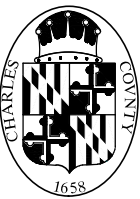
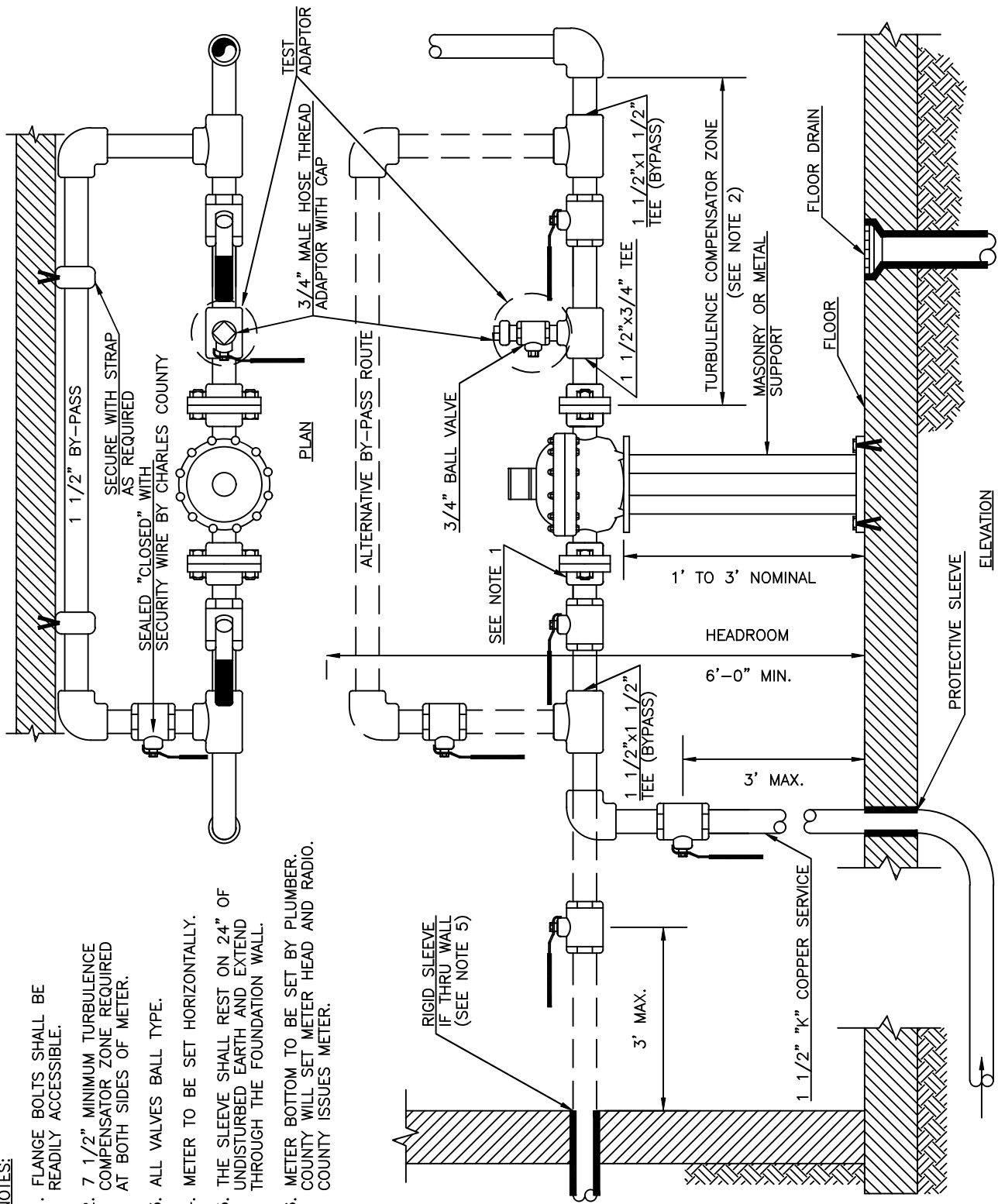


NOTES:

1. FLANGE BOLTS SHALL BE READILY ACCESSIBLE.
2. 7 1/2" MINIMUM TURBULENCE COMPENSATOR ZONE REQUIRED AT BOTH SIDES OF METER.
3. ALL VALVES BALL TYPE.
4. METER TO BE SET HORIZONTALLY.
5. THE SLEEVE SHALL REST ON 24" OF UNDISTURBED EARTH AND EXTEND THROUGH THE FOUNDATION WALL.
6. METER BOTTOM TO BE SET BY PLUMBER. COUNTY WILL SET METER HEAD AND RADIO. COUNTY ISSUES METER.



CHARLES COUNTY GOVERNMENT

DEPARTMENT OF PLANNING & GROWTH MANAGEMENT

APPROVED:

Raymond N. Shumaker, Jr. Oct 5, 2022
Raymond N. Shumaker, Jr. (Oct 5, 2022 12:20 EDT)
 CHIEF OF CODES, PERMITS, & INSPECTION SERVICES

DATE

Oct 5, 2022

J.B. Bill

PROFESSIONAL ENGINEER

DATE

STANDARD DETAIL

INSIDE WATER METER SETTING 1 1/2"

W

6.03

REVISIONS:

JUNE 1995

SEPTEMBER 2022