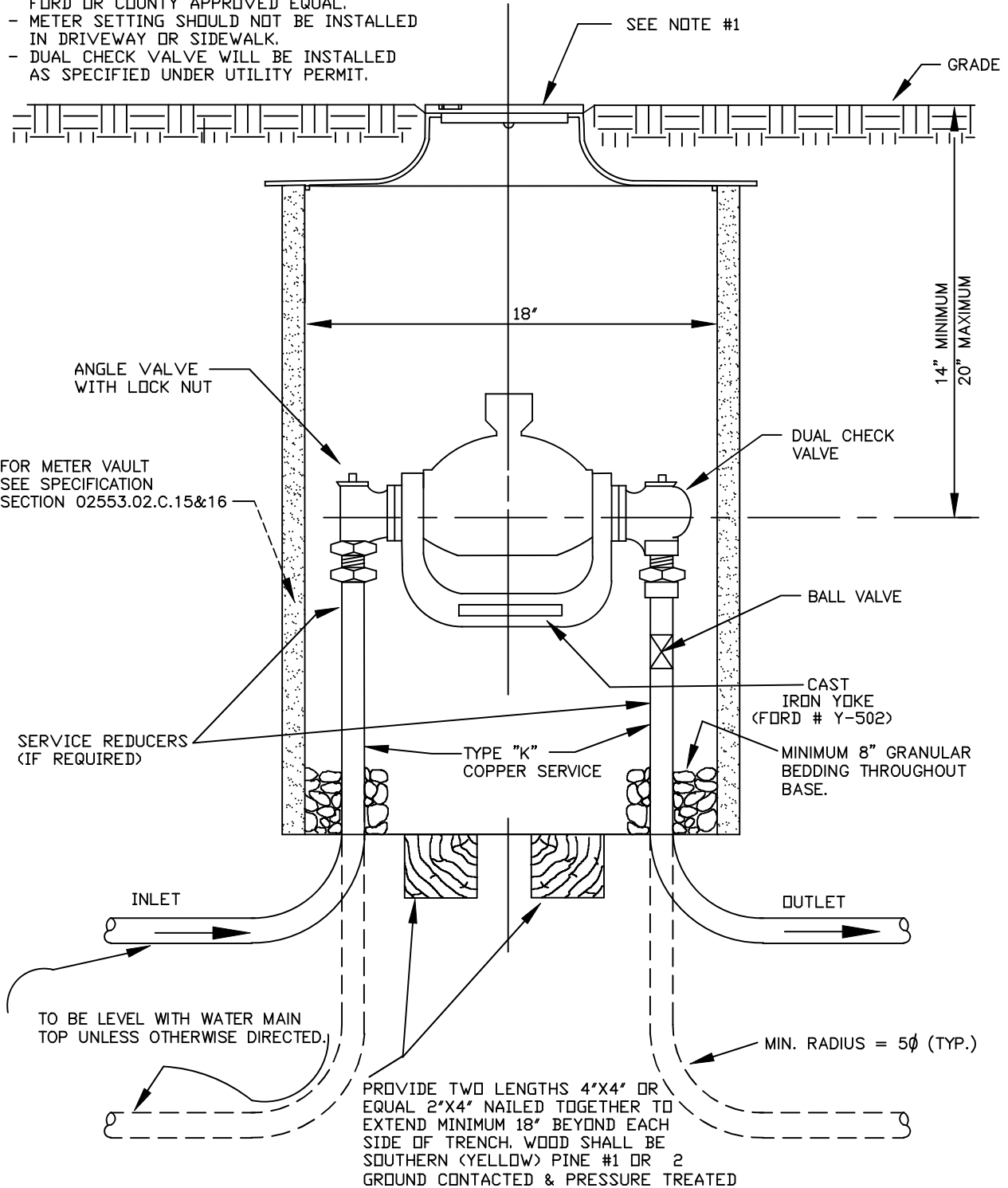


NOTES:

- 1 - ELECTRONIC METER READING COVER WITH REMOVABLE PLUG. MANUFACTURER FORD OR COUNTY APPROVED EQUAL.
- 2 - METER SETTING SHOULD NOT BE INSTALLED IN DRIVEWAY OR SIDEWALK.
- 3 - DUAL CHECK VALVE WILL BE INSTALLED AS SPECIFIED UNDER UTILITY PERMIT.



CHARLES COUNTY GOVERNMENT

DEPARTMENT OF PLANNING & GROWTH MANAGEMENT

APPROVED: Raymond N. Shumaker, Jr. Oct 5, 2022
Raymond N. Shumaker, Jr. (Oct 5, 2022 12:20 EDT)
 CHIEF OF CODES, PERMITS, & INSPECTION SERVICES DATE

H.B.M. Oct 5, 2022
 PROFESSIONAL ENGINEER DATE

STANDARD DETAIL

METER SETTING FOR
 5/8", 3/4" AND 1"
 METER ON A 1" SERVICE
 (WITHOUT FIRE SPRINKLER SYSTEM)

W

6.10

REVISIONS:

MARCH 2007

SEPTEMBER 2022