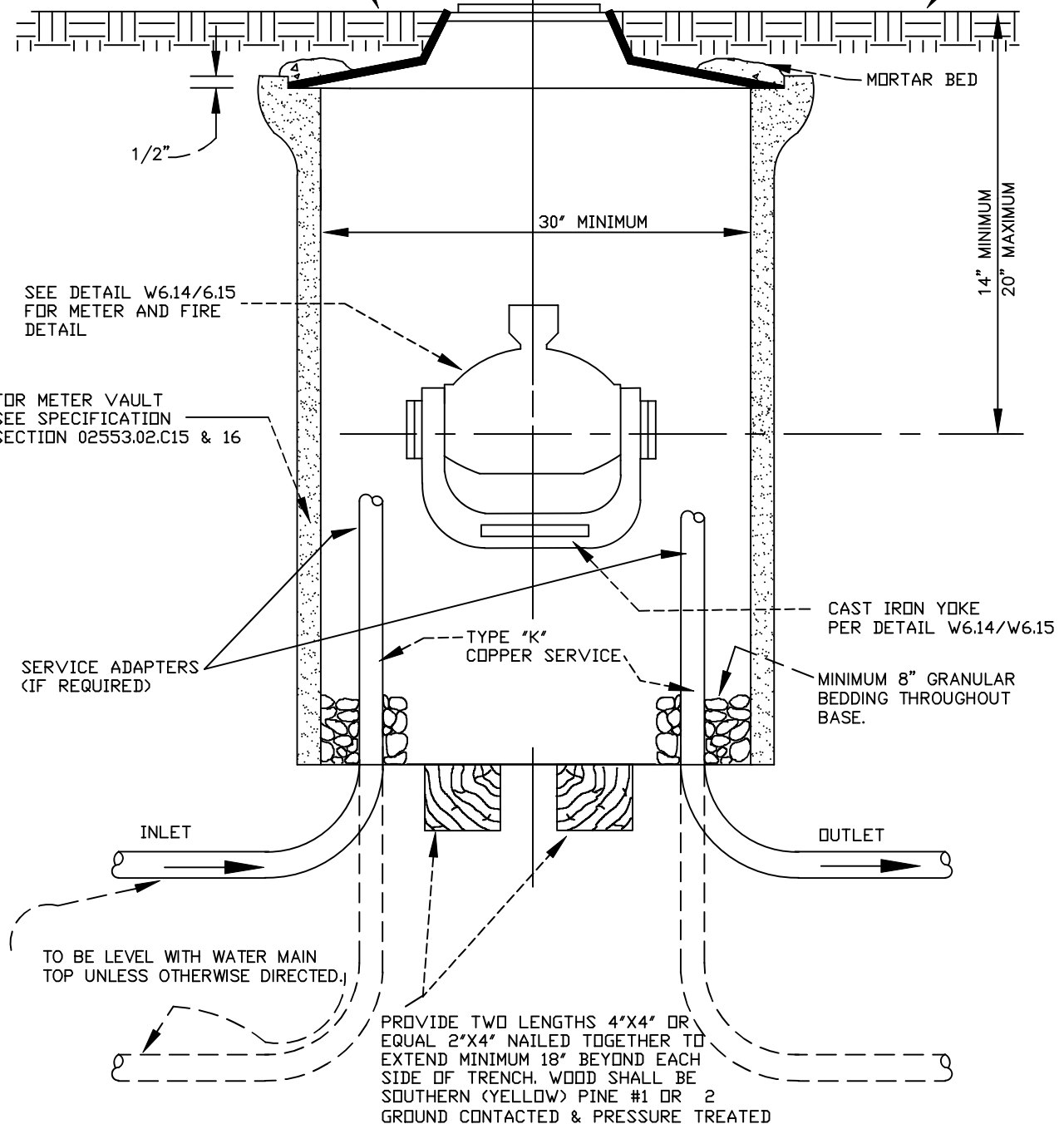


NOTES:

- 1 - ELECTRONIC METER READING COVER WITH REMOVABLE PLUG. MANUFACTURER FORD OR COUNTY APPROVED EQUAL.
- 2 - METER SETTING SHOULD NOT BE INSTALLED IN DRIVEWAY OR SIDEWALK.

8" CLEAR OPENING STANDARD METER FRAME & COVER (FORD TYPE "C")

FOR TRAFFIC SETTING USE CHARLES COUNTY STANDARD MANHOLE FRAME & COVER MARKED "CHARLES COUNTY WATER".



SEE DETAIL W6.14/6.15 FOR METER AND FIRE DETAIL

FOR METER VAULT SEE SPECIFICATION SECTION 02553.02.C15 & 16

SERVICE ADAPTERS (IF REQUIRED)

CAST IRON YOKE PER DETAIL W6.14/W6.15

MINIMUM 8" GRANULAR BEDDING THROUGHOUT BASE.

TO BE LEVEL WITH WATER MAIN TOP UNLESS OTHERWISE DIRECTED.

PROVIDE TWO LENGTHS 4"x4" OR EQUAL 2"x4" NAILED TOGETHER TO EXTEND MINIMUM 18" BEYOND EACH SIDE OF TRENCH. WOOD SHALL BE SOUTHERN (YELLOW) PINE #1 OR 2 GROUND CONTACTED & PRESSURE TREATED



**CHARLES COUNTY GOVERNMENT**

DEPARTMENT OF PLANNING & GROWTH MANAGEMENT

APPROVED: Raymond N. Shumaker, Jr. Oct 5, 2022  
Raymond N. Shumaker, Jr. (Oct 5, 2022 12:20 EDT)  
 CHIEF OF CODES, PERMITS, & INSPECTION SERVICES

J.B.M. Oct 5, 2022  
 PROFESSIONAL ENGINEER DATE

STANDARD DETAIL  
 METER SETTING FOR  
 5/8", 3/4" AND 1"  
 METER ON A 1", 1-1/2"  
 OR 2" SERVICE LINE  
 (WITHOUT FIRE SPRINKLER SYSTEM)

W
6.16
REVISIONS:
MARCH 2007
SEPTEMBER 2022