



Charles County Department of Planning and Growth Management

NOTICE

NOTICE #: 23-04 **NOTICE RELEASE DATE:** 9/1/2023 **CONTACT:** Charles County Permits Office
301.645.0692
PGMPermitsOffice@charlescountymd.gov

Resubmittal Requirements for Building Permits

Effective September 18, 2023

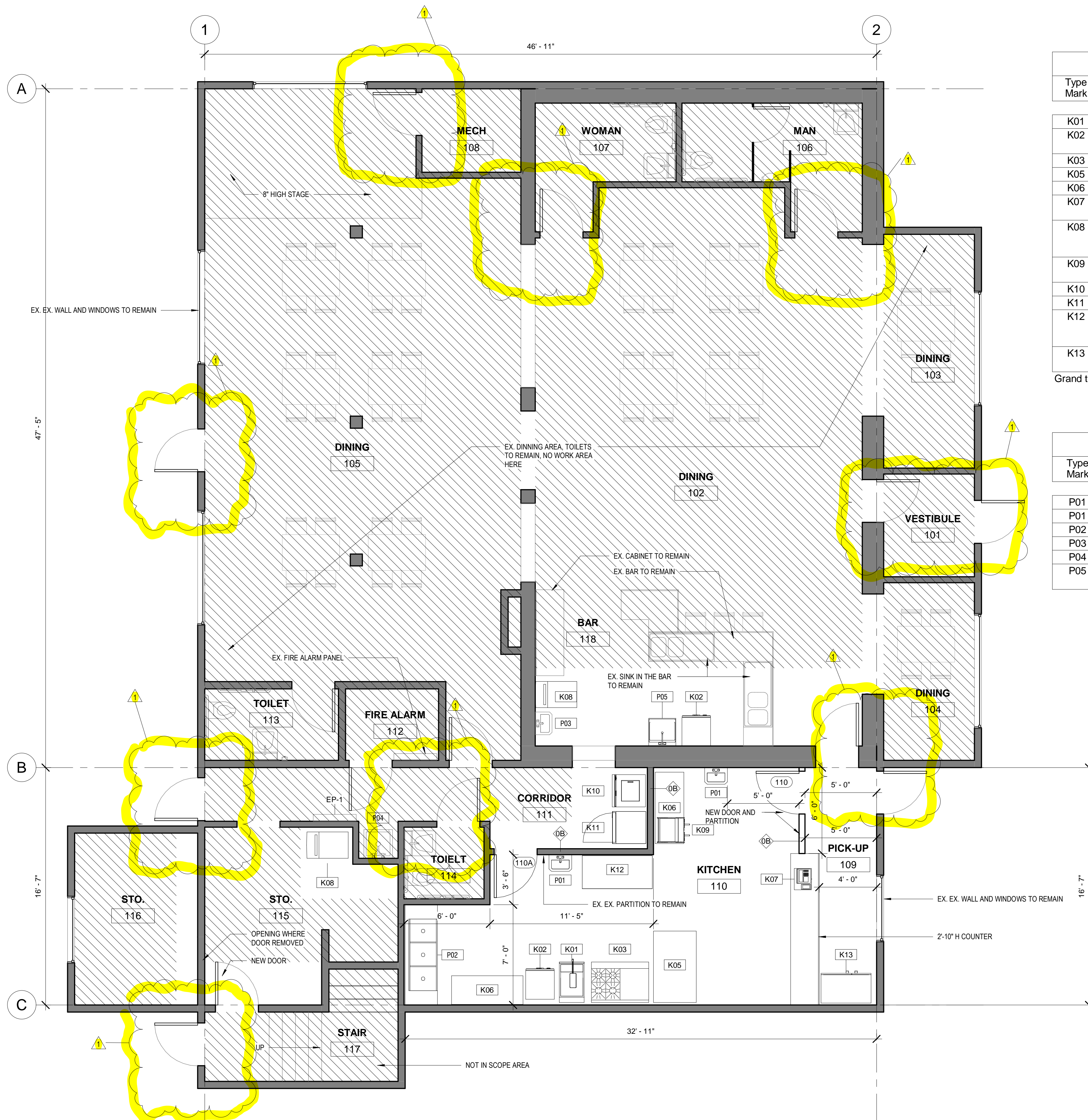
In a continued effort to improve the Building Permit Review Process, the Department of Planning and Growth Management request that all submittals of revisions to unissued Building Permits include a comment response memo or letter from the applicant or representative. The document should provide an explanation or description of the revisions and should also denote the specific sheets/pages where revisions were made.

In addition, all plans for commercial permit revisions must contain a full set of plans, include a "revision title block" with revision date, and the revised areas must be shown within a cloud on the revised areas within the plan. See sample attached.

Please note that each subsequent resubmittal starting with the fourth resubmittal will be charged applicable additional review fees based on the hourly plan review rate. Please reference the current fees and charges schedule for fee rates.

This requirement takes effect September 18, 2023.

Please contact the Charles County Permits Office at (301) 645.0692 or PGMPermitsOffice@charlescountymd.gov for any questions or clarifications. Those citizens with special needs, please contact Charles County Department of Planning and Growth Management, voice phone number 301-645-0692 or Maryland TDD 1-800-735-2258.



Specialty Equipment Schedule					
Type Mark	Count	EQUIPMENT	Type	Notes	Mark
K01	1	FRYER	Electric Fryer	Avantco EF40-240-1 40 lb. Electric Floor Fryer - 240V, 1 Phase	
K02	2	DISHWASHER	Commercial Dishwasher	EURODIB DSP4DPS 30-RACKS PER HOUR STAINLESS STEEL UNDERCOUNTER COMMERCIAL DISHWASHER	
K03	1	STOVE GRILL	60" Electric Range	IMPERIAL IR SERIES	
K05	1	WORK TABLE	5'-0" x 3'-0"		
K06	2	WORK TABLE	6'-0" x 2'-0"		
K07	1	CASH REGISTER	POS		
K08	2	ICE MAKER	Cube Ice Machine with Bin	VEVOR ICE MAKER 90-100-LB24H 33-LB STORAGE 90-LB FLIP-UP DOOR FREESTANDING FOR COMMERCIAL USE CUBED ICE MAKER (SILVER)	
K09	1	COFFEE MACHINE	Coffee_Machine		
K10	1	DISHWASHER	Electric Washer		
K11	1	DRYER	Front Load Electric Dryer		
K12	1	REFRIGERATOR	Worktop_refrigerator	AVANTCO UBB-2G-HC 59" STAINLESS STEEL COUNTER HEIGHT GLASS DOOR BACK BAR REFRIGERATOR WITH LED LIGHTING	
K13	1	SODA REFRIGERATOR	Refrigerator		

Grand total: 15

Plumbing Fixture Schedule			
Type Mark	Phase Created	Family	Description
P01	New Construction	Lavatory - Wall Mounted	
P01	New Construction	Lavatory - Wall Mounted	
P02	New Construction	sink_3_compartment	PROVIDE GREASE TRAP
P03	Existing	Lavatory - Wall Mounted	
P04	Existing	Service Sink Square	Mop Sink, floor mounted
P05	New Construction	Utility_Sink	STEELTON 36" 16-GAUGE STAINLESS STEEL ONE COMPARTMENT COMMERCIAL UTILITY SINK 36" X 21" X 14" BOWL

① LEVEL 1
1/4" = 1'-0"

No.	Description	Date
1	Revision to address county comments	8.31.23

FLOOR PLAN

Project number
Date
Drawn by
Checked by

A101

Scale 1/4" = 1'-0"