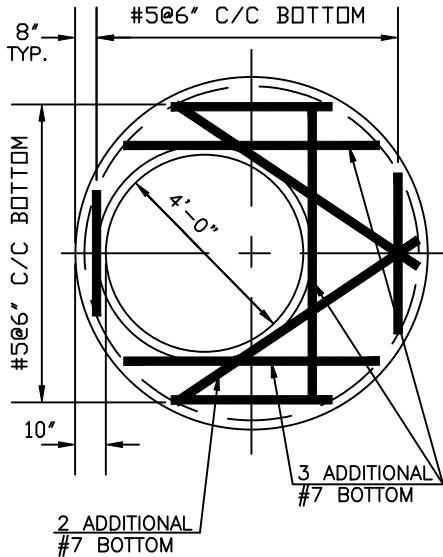
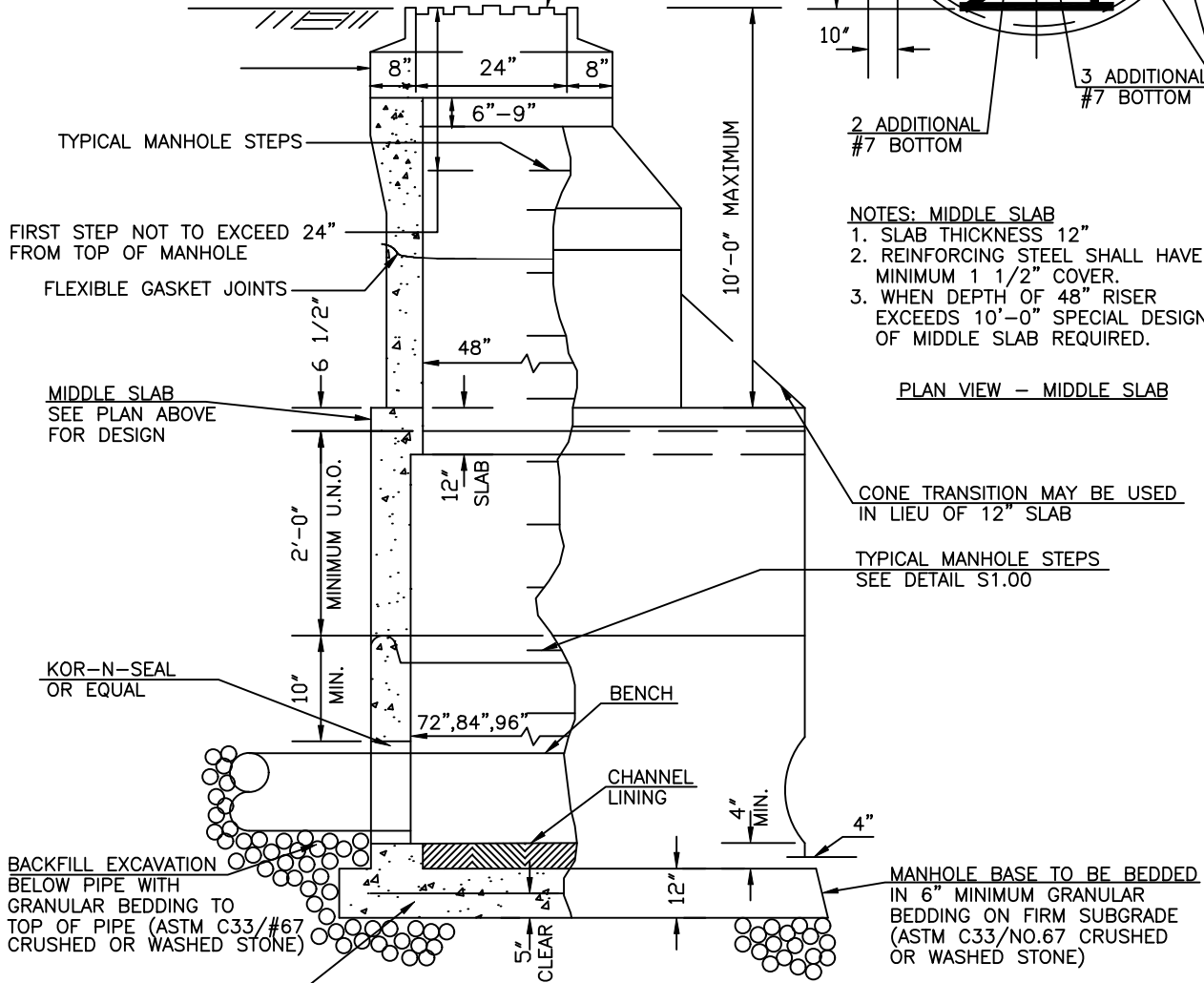


STANDARD WATERTIGHT MANHOLE FRAME AND COVER
SEE DETAILS S3.01, S3.02 OR STANDARD
TRAFFIC FRAME & COVER—SEE DETAIL S3.00)



NOTES: MIDDLE SLAB
1. SLAB THICKNESS 12"
2. REINFORCING STEEL SHALL HAVE
MINIMUM 1 1/2" COVER.
3. WHEN DEPTH OF 48" RISER
EXCEEDS 10'-0" SPECIAL DESIGN
OF MIDDLE SLAB REQUIRED.

PLAN VIEW - MIDDLE SLAB

CONE TRANSITION MAY BE USED
IN LIEU OF 12" SLAB

TYPICAL MANHOLE STEPS
SEE DETAIL S1.00

PRECAST BASE REINFORCED
W/#6 @12"C/C EACH WAY

NOTES: MANHOLE
1. SHALLOW MANHOLE IS WITHOUT 48" RISER. SLAB TO BE SAME AS
MIDDLE SLAB EXCEPT FOR 36" OPENING.
2. NOTES (1) THROUGH (5) ON S1.00 APPLY TO THIS DETAIL.



CHARLES COUNTY GOVERNMENT

DEPARTMENT OF PLANNING & GROWTH MANAGEMENT

APPROVED: Raymond N. Shumaker, Jr. Aug 8, 2023
CHIEF OF CODES, PERMITS, & INSPECTION SERVICES DATE

ALB Aug 8, 2023
PROFESSIONAL ENGINEER DATE

STANDARD DETAIL

PRECAST CONCRETE
MANHOLE DETAIL
72", 84", 96" DIAMETER

S
1.02
REVISIONS: DECEMBER 2022