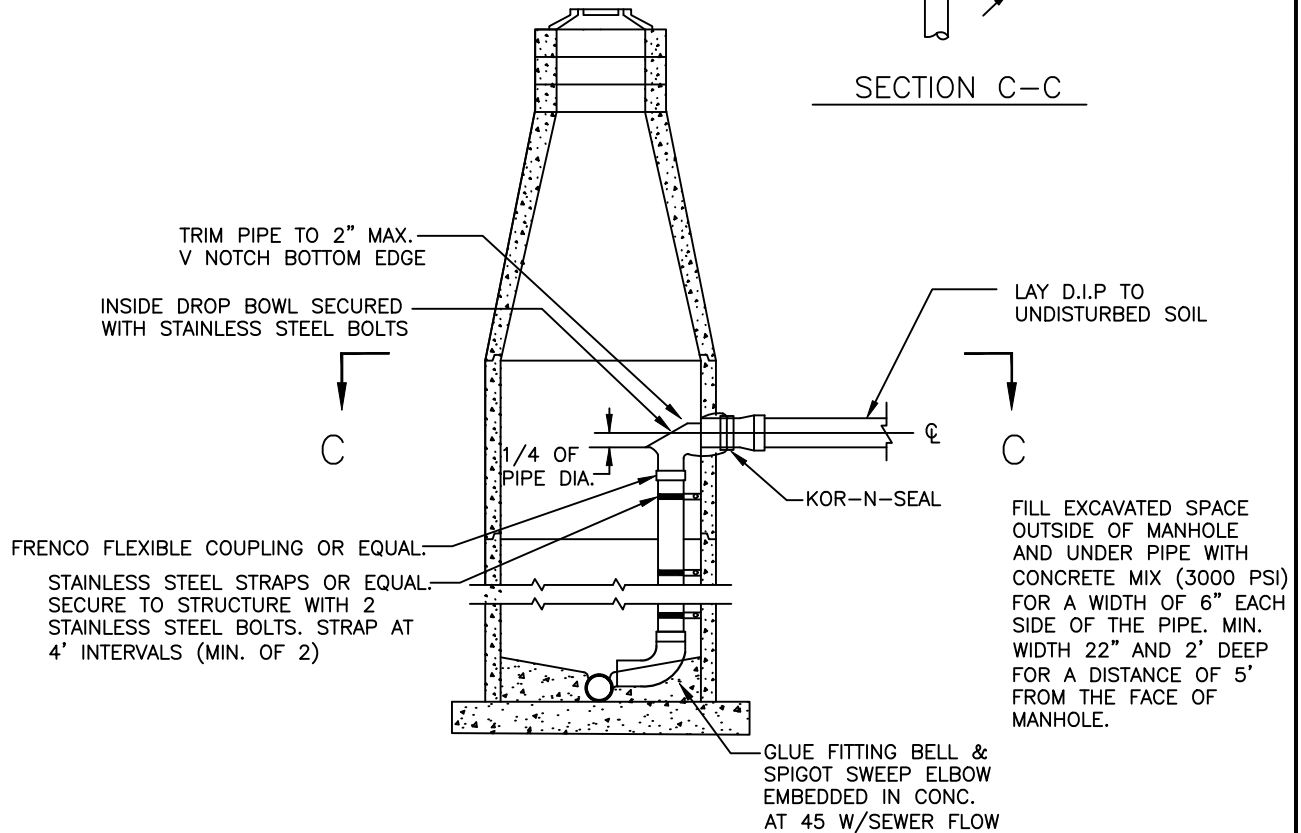
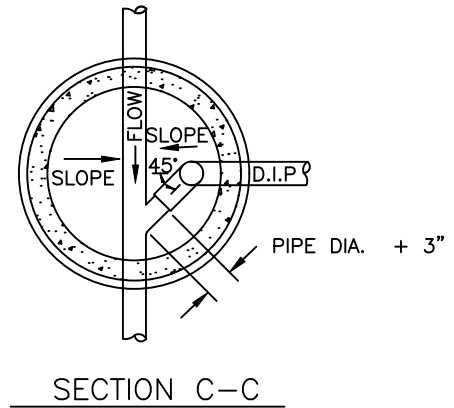
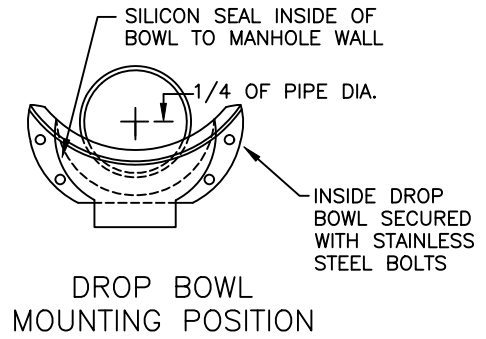


NOTES:

1. ALL INSIDE DROP CONNECTIONS FOR SERVICES AND COLLECTOR SEWERS SHALL USE THE DROP BOWL AS PRODUCED BY RELINER-DURAN, INC., OR APPROVED EQUAL.
2. SECURE DROP PIPE TO MANHOLE WALL, WITH RELINER-DURAN, INC STAINLESS STEEL ADJUSTABLE CLAMPING BRACKETS, OR APPROVED EQUAL.
3. A BOWL HAT MAY BE REQUIRED AS NECESSARY. BOWL MUST HAVE SEAL BETWEEN BOWL AND MANHOLE WALL.



CHARLES COUNTY GOVERNMENT

DEPARTMENT OF PLANNING & GROWTH MANAGEMENT

APPROVED: Raymond N. Shumaker, Jr. Aug 8, 2023

CHIEF OF CODES, PERMITS, & INSPECTION SERVICES DATE

H.P.L.

Aug 8, 2023

PROFESSIONAL ENGINEER

DATE

STANDARD DETAIL

INSIDE DROP MANHOLE CONNECTION

S

1.06

REVISIONS:  
DECEMBER 2022