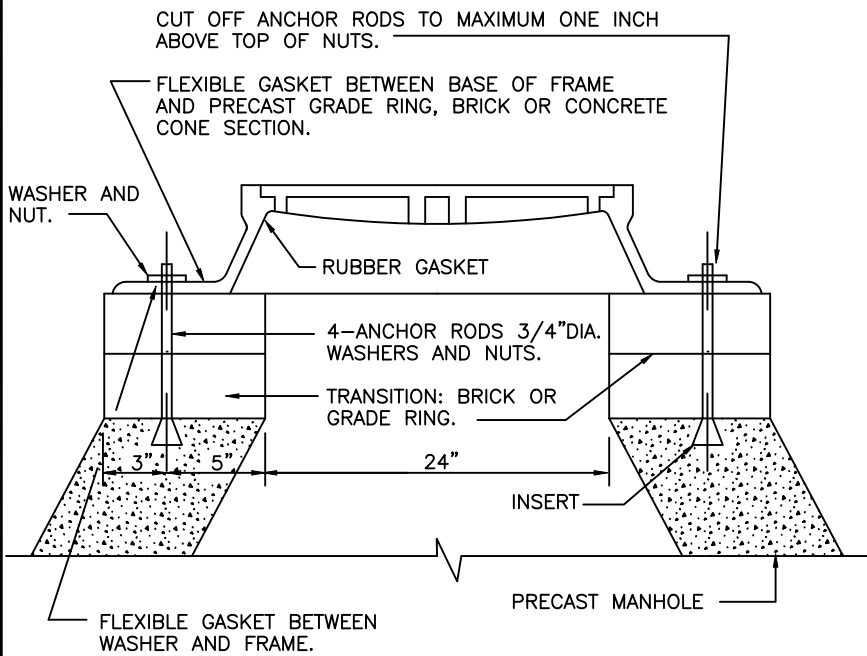


PLAN



SECTION A

(NOT TO BE USED IN ROADWAYS/TRAFFIC AREAS) (USE IN ALL EASEMENT/GRASSY AREAS)

NOTES:

1. ADJUST MANHOLE FRAME AND COVER TO PROPER GRADE, CROSS-SLOPE, AND ELEVATION IN SPACE DEDICATED TO PUBLIC USE, TRAVELED WAY, OR WHEN DESIGNATED TO MEET EXISTING GRADE OTHERWISE PRECAST MANHOLE TO BE BUILT WITHOUT TRANSITION.
2. TO BRING AN INTERM SETTING TO FINAL GRADE, REMOVE EXISTING ANCHOR RODS, WASHERS, NUTS, FRAME AND COVER, AND FLEXIBLE GASKET. INSTALL NEW ANCHOR RODS, BRICK/GRADE RINGS AND REINSTALL EXISTING FRAME/COVER, AND NEW WASHERS/NUTS. USE NEW FLEXIBLE GASKET.
3. PARGING
 - A. MANHOLE BUILT WITHOUT TRANSITION: NO PARGING NECESSARY
 - B. MANHOLE BUILT WITH BRICK TRANSITIONS: PARGE TOP OF BRICK WORK AND EXTERIOR OF BRICK WORK. EXTEND PARGING 6" BELOW TO OF CONE SECTION.
 - C. MANHOLE BUILT WITH GRADE RING TRANSITION: NO PARGING NECESSARY.
4. WATER PROOFING
 - A. MANHOLE BUILT WITH BRICK TRANSITION: AFTER SETTING MANHOLE FRAME AND COVER, APPLY TWO COATS OF ASPHALT BASED WATER PROOFING. ASPHALT BASED WATER PROOFING SHALL EXTEND 2" MINIMUM BEYOND PARGING ON CONE. AT FRAME EXTEND WATER PROOFING TO COVER MANHOLE FRAME FLANGE.
 - B. MANHOLE BUILT WITH GRADE RING TRANSITION OR WITHOUT TRANSITION: NO WATERPROOFING NECESSARY.
5. TRANSITION SHALL BE A MAXIMUM OF 12 INCHES.
6. PRIOR TO INSERTING BOLTS INTO FRAME, LUBE SAME WITH "NEVER-SEIZE" LUBRICANT OR COUNTY APPROVED EQUAL.



CHARLES COUNTY GOVERNMENT
 DEPARTMENT OF PLANNING & GROWTH MANAGEMENT
 APPROVED: Raymond N. Shumaker, Jr. Aug 8, 2023
Raymond N. Shumaker, Jr. (Aug 8, 2023 12:00 EDT)
 CHIEF OF CODES, PERMITS, & INSPECTION SERVICES DATE
Andy B. Hill Aug 8, 2023
Andy B. Hill (Aug 8, 2023 18:40 EDT)
 PROFESSIONAL ENGINEER DATE

STANDARD DETAIL
 FINAL SETTING ANCHORING
 24" WATERTIGHT FRAME &
 COVER TO MH WALL

| |
|------------|
| S |
| 3.04 |
| REVISIONS: |
| |
| |
| |