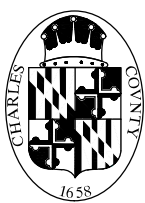
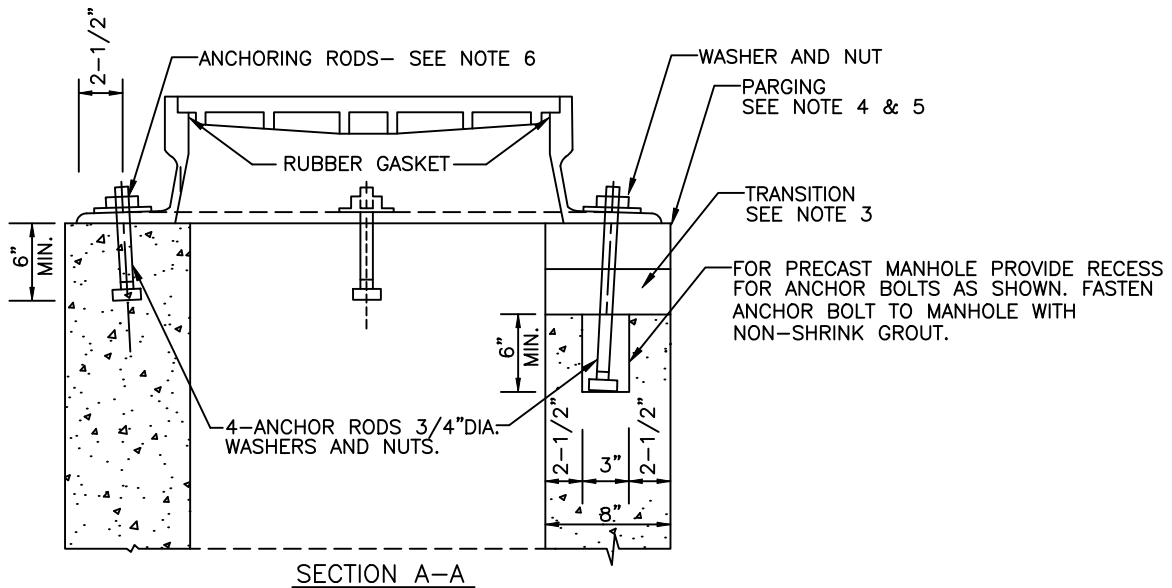


NOTES:

1. ADJUST MANHOLE FRAME AND COVER WITH THE TOLERANCE OF 1/8" TO THE PROPER GRADE, CROSS-SLOPE, AND ELEVATION AS NOTED ON THE DRAWINGS.
2. WHEN MANHOLE FRAME AND COVER ARE DESIGNATED TO BE BUILT ABOVE EXISTING GRADE, GRADE RINGS ARE NOT REQUIRED.
3. HEIGHT FOR BRICK TRANSITION MINIMUM 4" TO MAXIMUM 12".
4. PARGE TOP AND EXTERIOR OF BRICK TRANSITION. EXTEND PARGING 6" ON PRECAST SECTION OF MANHOLE.
5. AFTER SETTING MANHOLE FRAME AND COVER, APPLY TWO COATS OF ASPHALT BASED WATER PROOFING FROM FRAME AND COVER TO 2" BEYOND PARGING ON PRECAST SECTION OF MANHOLE.
6. FIELD CUT ENDS OF ANCHOR ROD TO MAXIMUM 1" ABOVE TOP OF NUT. ROUGH EDGES SHALL BE GROUND SMOOTH.



**CHARLES COUNTY GOVERNMENT**

DEPARTMENT OF PLANNING & GROWTH MANAGEMENT

APPROVED: Raymond N. Shumaker, Jr. Aug 8, 2023  
Raymond N. Shumaker, Jr. (Aug 8, 2023 12:00 EDT)

CHIEF OF CODES, PERMITS, & INSPECTION SERVICES

DATE

A. B. L.  
Andy B. Linn (Aug 8, 2023 14:40 EDT)

PROFESSIONAL ENGINEER

Aug 8, 2023

DATE

STANDARD DETAIL

PRECAST CONCRETE  
 MANHOLE BUILT OVER  
 EXISTING SEWER TYPE II

S  
 3.05-A

REVISIONS:

|  |
|--|
|  |
|  |
|  |
|  |