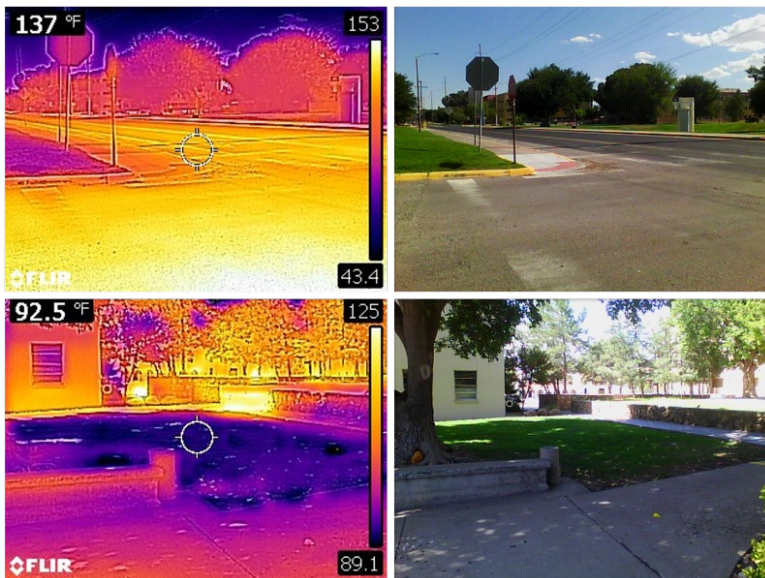


Climate Challenge: Increasing Temperatures

Equity Lens: Urban Heat Islands



Heat affects everyone.

Some areas are often hotter than others. These hotspots are called Urban Heat Islands.

Urban heat islands are caused by the uneven, inequitable spread of land covers in the urban landscape, leading to more heat-absorbing buildings and pavements and fewer cool spaces with trees and greenery.

Residents of urban heat islands are more likely to experience heat-related illnesses and death.

Related negative effects include worse air quality and a higher cost burden of air conditioning bills.