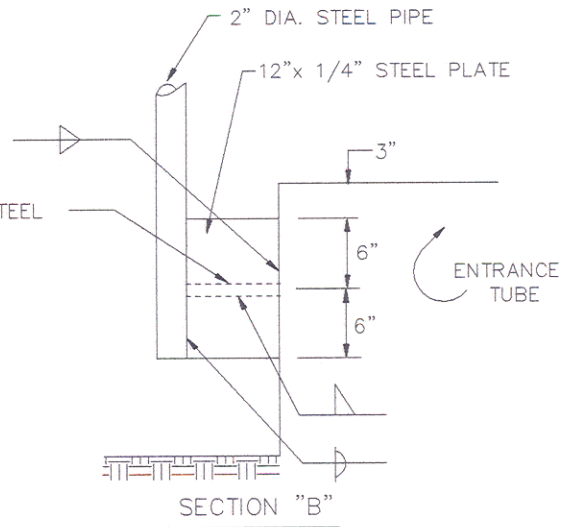


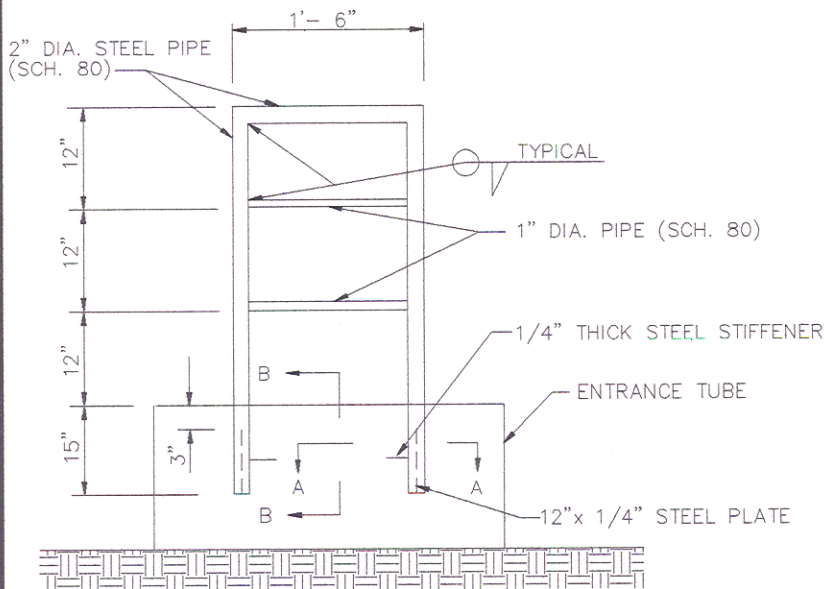
NOTES:

1. ALL STEEL SHALL BE ASTM A-36.
2. WELDS SHALL BE 3/16" WIDE.
3. ENTRANCE COVER SHALL OPEN MINIMUM 85° FROM HORIZONTAL.
4. PAINT NEW MEMBERS AND WELDED AREA TO MATCH COATING SYSTEM AND COLOR WITH OTHERS.

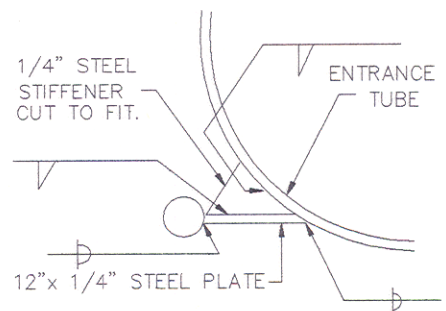
PLAN



SECTION "B"



ELEVATION



SECTION "A"

CHARLES COUNTY GOVERNMENT

DEPARTMENT OF PLANNING & GROWTH MANAGEMENT

APPROVED:

*[Signature]* 6/29/95  
DIRECTOR OF DEVELOPMENT SERVICES DATE

*[Signature]* 6/29/95  
WATER / SEWER ENGINEER DATE

STANDARD DETAIL

DRYWELL ACCESS  
GRAB BAR  
(FOR PACKAGE  
PUMPING STATION)

REVISIONS:


M  
3.00