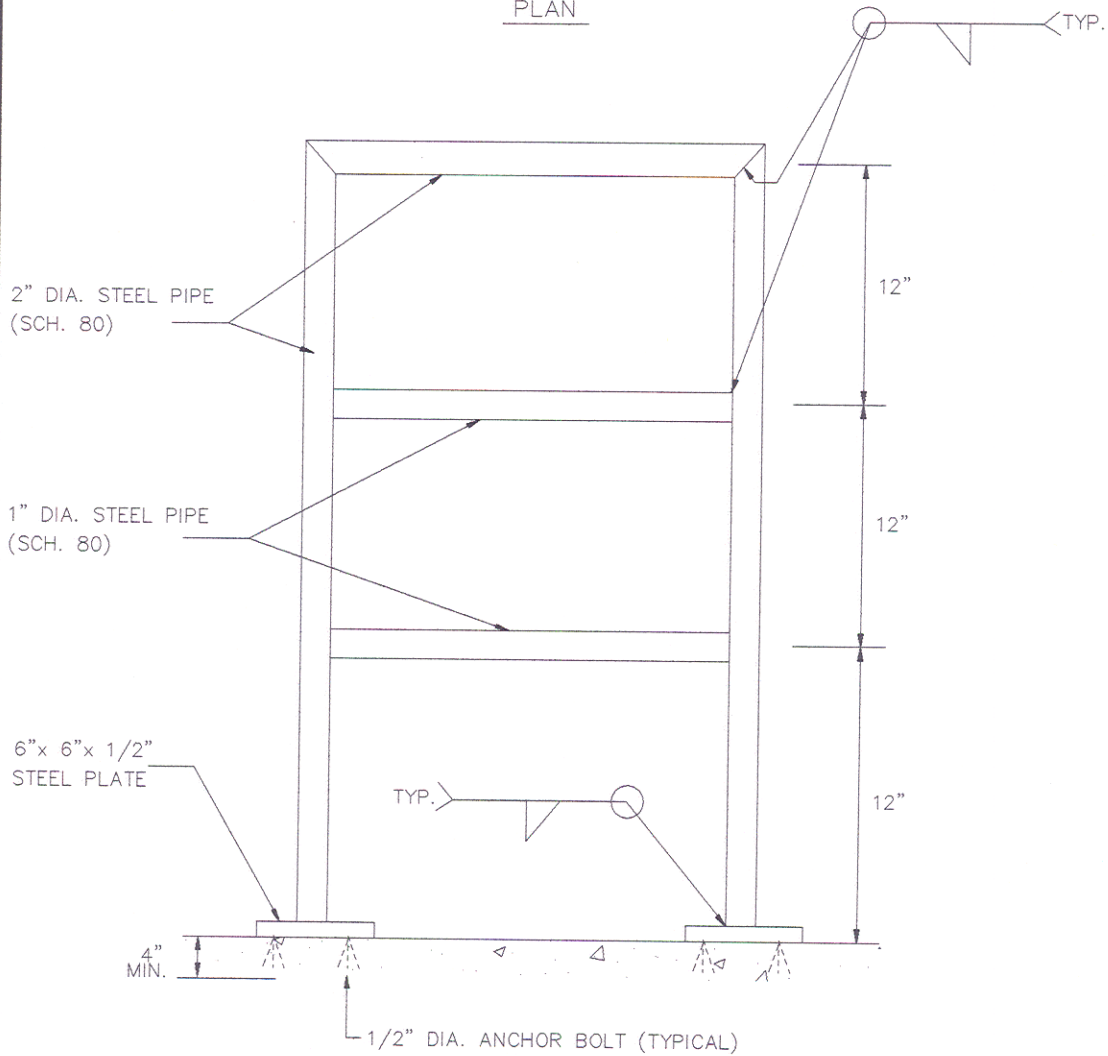


PLAN

NOTES:

1. ALL STEEL SHALL BE ASTM A-36.
2. WELDS SHALL BE 3/16" WIDE.
3. PAINT NEW MEMBERS TO MATCH COATING SYSTEM AND COLOR WITH OTHER.
4. GRAB BAR IS LOCATED AT 6" FROM EDGE OF OPENING UNLESS OTHERWISE NOTED.



ELEVATION

CHARLES COUNTY GOVERNMENT

DEPARTMENT OF PLANNING & GROWTH MANAGEMENT

APPROVED:

[Signature] 6/29/95
DIRECTOR OF DEVELOPMENT SERVICES DATE

[Signature] 6/29/95
WATER / SEWER ENGINEER DATE

STANDARD DETAIL

WETWELL ACCESS
 GRAB BAR

REVISIONS:

M
 3.02

110