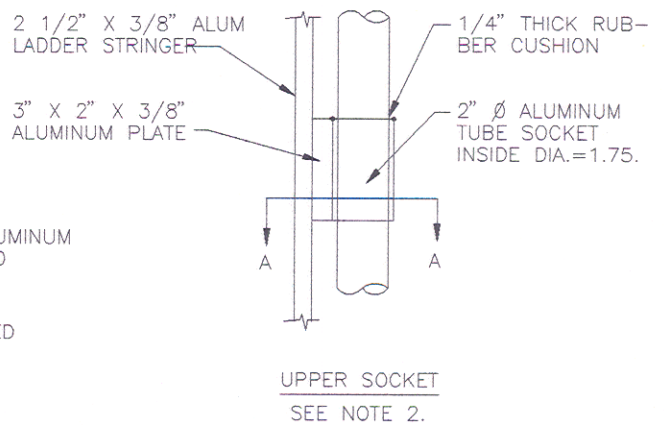
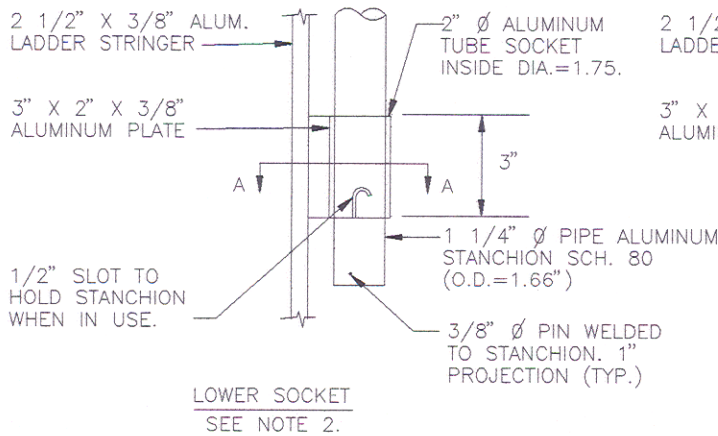
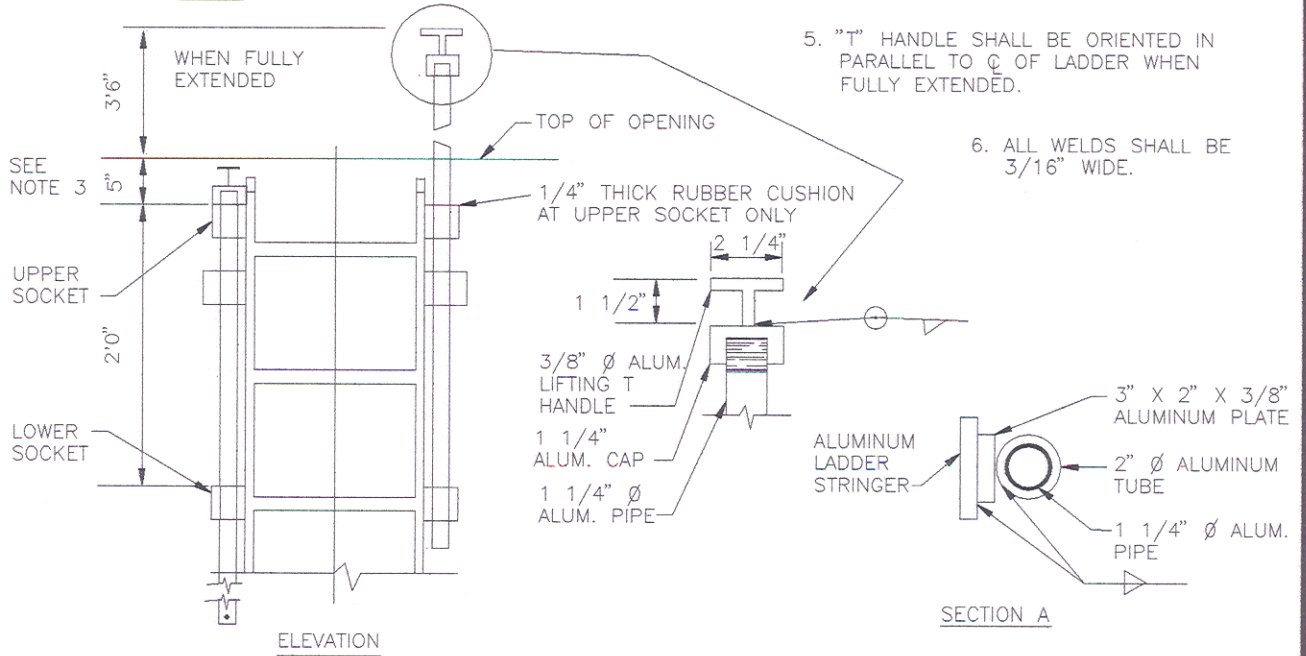


NOTE:

1. ALL ALUMINUM SHALL BE 6061-T6 ALLOY.
2. PRE-FABRICATED CASTING SOCKET MAY BE USED.
3. LOCATION OF TOP SOCKET MAY BE LOWERED IF LIFTING T OBSTRUCTS COVER OF ACCESS WHEN CLOSED.
4. SEE M/3.03 FOR LADDER DETAIL.
5. "T" HANDLE SHALL BE ORIENTED IN PARALLEL TO Q OF LADDER WHEN FULLY EXTENDED.
6. ALL WELDS SHALL BE 3/16" WIDE.



CHARLES COUNTY GOVERNMENT

DEPARTMENT OF PLANNING & GROWTH MANAGEMENT

APPROVED:

*Michael H. Hays* 6/29/95  
DIRECTOR OF DEVELOPMENT SERVICES DATE  
*Michael H. Hays* 6/29/95  
WATER / SEWER ENGINEER DATE

STANDARD DETAIL

LADDER EXTENSION

REVISIONS:

M  
3.04