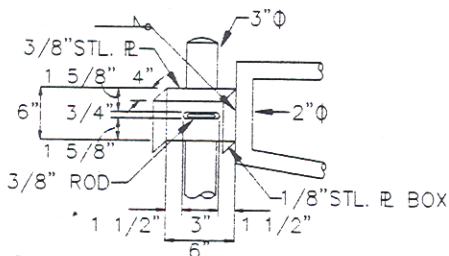
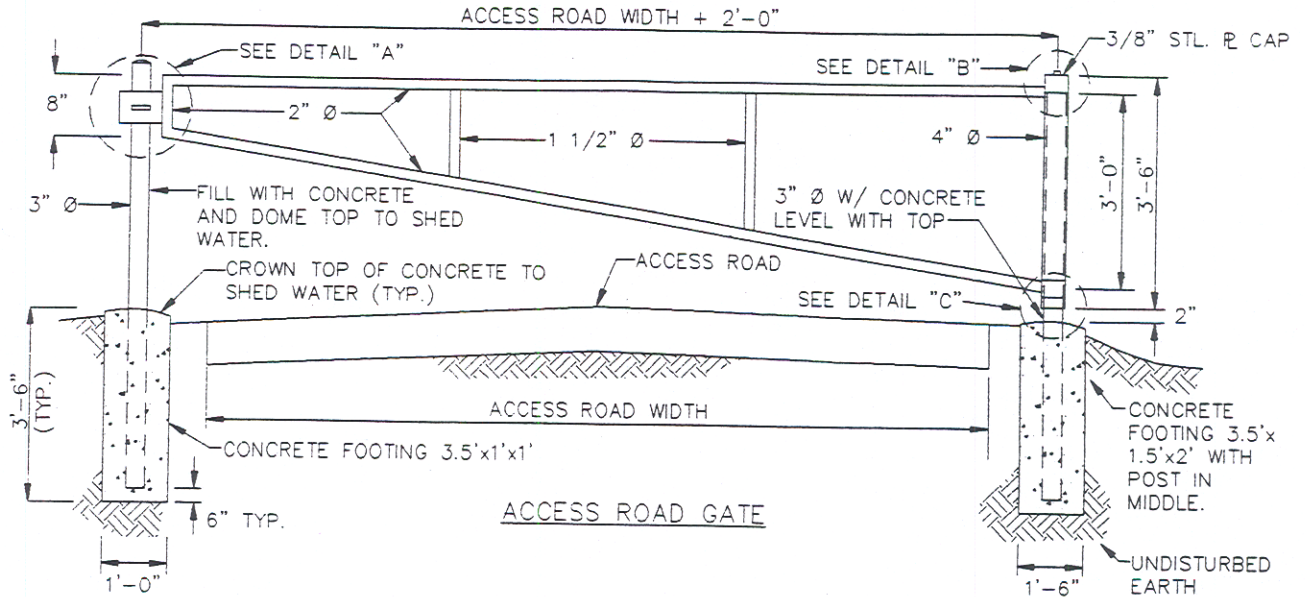
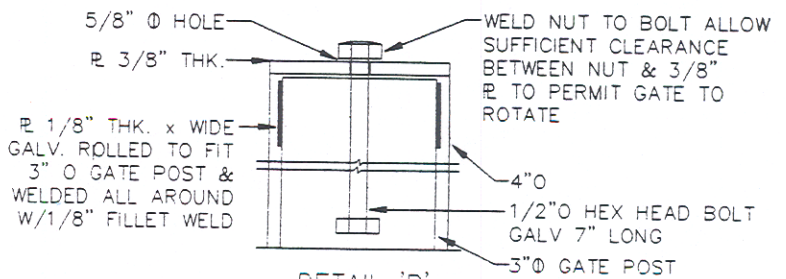


NOTES

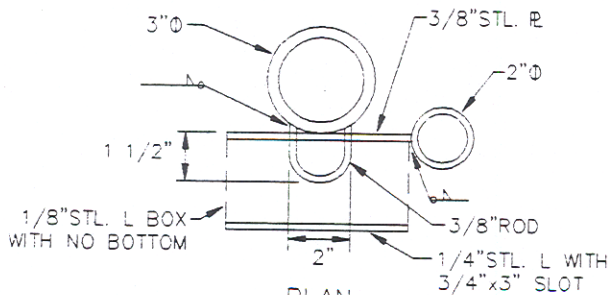
1. ALL METAL USED IN THE MANUFACTURE OF THE ACCESS ROAD GATE TO BE HOT DIP GALVANIZED. ALL WELDS & PIPE TO BE PAINTED & TOUCHED UP IN ACCORDANCE WITH STANDARD SPECIFICATION SECTION 05500 IN ACCORDANCE WITH MANUFACTURERS RECOMMENDATIONS.
2. ALL JOINTS TO BE WELDED ALL AROUND WITH 3/16" WELDS.
3. ALL PIPE TO BE SCHEDULE 40 STEEL. DIAMETERS SHOWN ARE NOMINAL PIPE SIZE.
4. PADLOCK TO BE FURNISHED IN ACCORDANCE WITH SECTION 02710 OF THE STANDARD SPECIFICATIONS.
5. CONTRACTOR TO FURNISH AND INSTALL AN ADDITIONAL 3"Ø POST WITH 3/8" ROD. LOCATE TO HOLD GATE IN AN OPEN POSITION 90° FROM THAT SHOWN BELOW.
6. GATE TO SWING IN TOWARDS W.S.S.C. PROPERTY.
7. WIDTH OF GATE NOT TO EXCEED 16 FEET.



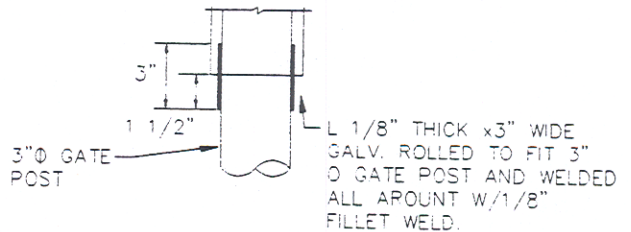
ELEVATION



DETAIL 'B'



**PLAN
DETAIL 'A'**



DETAIL 'C'

**DETAILS
NOT TO SCALE**

CHARLES COUNTY GOVERNMENT

DEPARTMENT OF PLANNING & GROWTH MANAGEMENT

APPROVED: *[Signature]* 6/29/95
DIRECTOR OF DEVELOPMENT SERVICES DATE

[Signature] 6/29/95
WATER / SEWER ENGINEER DATE

STANDARD DETAIL
ACCESS ROAD GATE

REVISIONS:

M
3.05