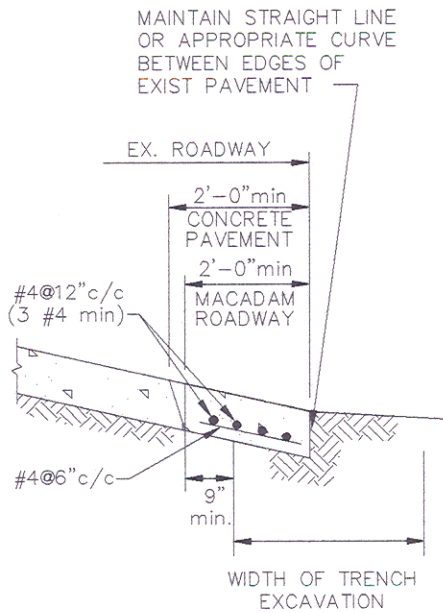


FOR BITUMINOUS SURFACE
OR MACADAM SEE ADJACENT
DETAILS



EDGE OF PAVING REPAIR
(TYPICAL)

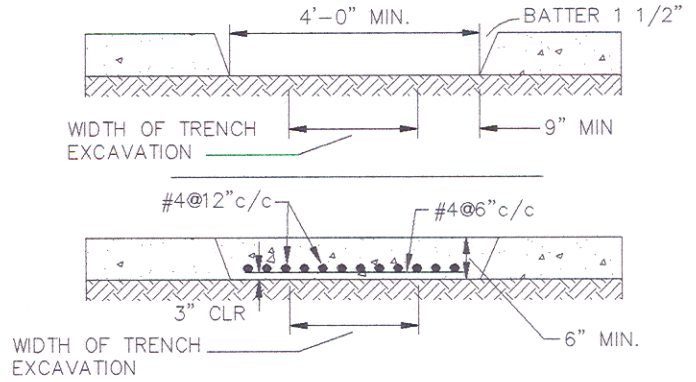
GENERAL NOTES

1. ALL CONCRETE SHALL BE 4000 PSI @ 28 DAYS. CEMENT SHALL BE HIGH EARLY STRENGTH. (TYPE III)
2. BITUMINOUS CONCRETE SHALL BE IN ACCORDANCE W/ MSHA SPECIFICATION.
3. PRIOR TO PLACING BITUMINOUS SURFACING ALL UTILITY STRUCTURES SHALL BE BROUGHT TO GRADE. BACKFILL AROUND UTILITY STRUCTURES SHALL BE MADE WITH 3000 PSI. CONCRETE.

ALL EXPOSED EDGES OF EXISTING BITUMINOUS SURFACE COUSE AND SURFACE OF CONCRETE BASE SHALL BE PRIMED BEFORE THE BITUMINOUS MIXTURE IS PLACED.

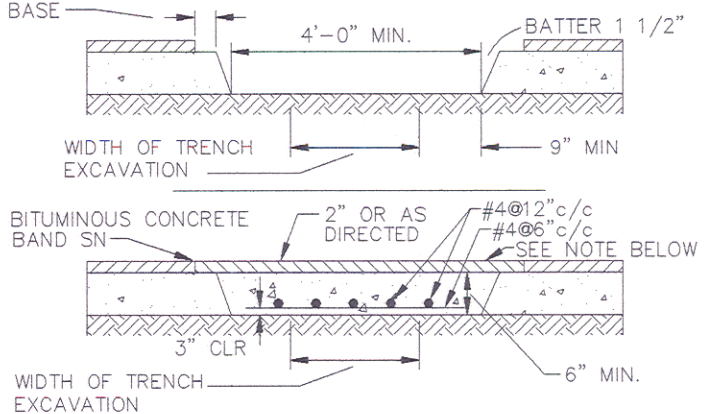
CONCRETE PAVEMENT

CLEAN AND WET EDGES OF CUTS BEFORE PLACING CONC. COMPACT AND DAMPEN SUBGRADE BEFORE PLACING BARS



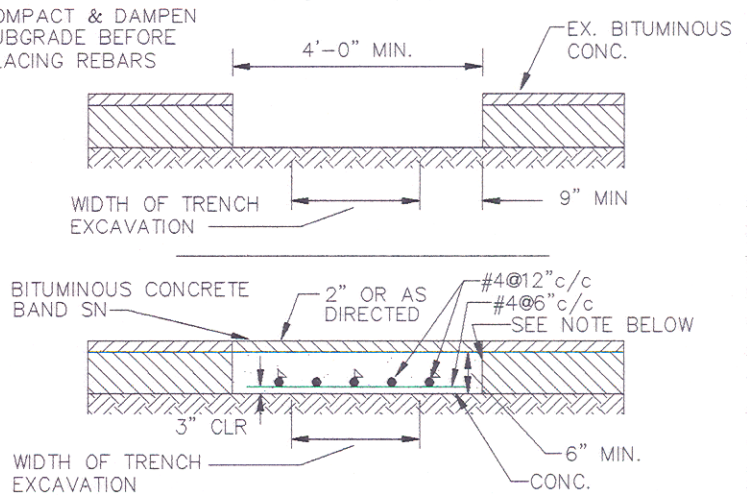
BITUMINOUS CONCRETE SUBSURFACE COURSE
ROADWAY OVER CONCRETE BASE

CUT BITUMINOUS SURFACE BACK 3" FROM EDGE OF BASE COMPACT AND DAMPEN SUBGRADE BEFORE PLACING BARS



MACADAM ROADWAY

COMPACT & DAMPEN SUBGRADE BEFORE PLACING REBARS



CHARLES COUNTY GOVERNMENT

DEPARTMENT OF PLANNING & GROWTH MANAGEMENT

APPROVED:

[Signature]
DIRECTOR OF DEVELOPMENT SERVICES DATE
[Signature] 6/29/95
WATER / SEWER ENGINEER DATE

STANDARD DETAIL

METHOD OF CUTTING &
REPAIRING ROADWAYS IN
AREA WITHOUT JURISDICTIONAL
REQUIREMENTS

REVISIONS:

M
5.00