

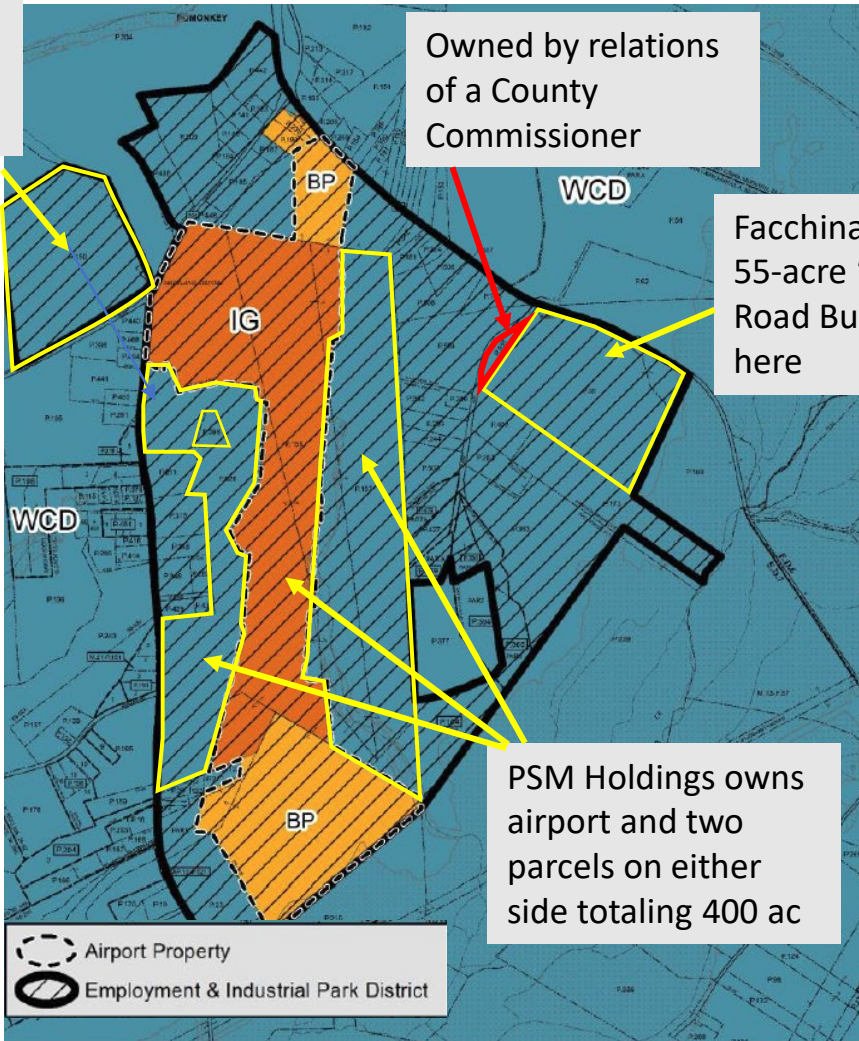
Charles County Commissioners want to rezone the blue cross-hatched areas from conservation to industrial (IG) or business-park (BP) uses.

50-acres Maryland carved from Chapman Forest for the County

Owned by relations of a County Commissioner

Facchina wants a 55-acre "Bryans Road Business Park" here

PSM Holdings owns airport and two parcels on either side totaling 400 ac



--- Airport Property
— Employment & Industrial Park District