

1-19	REVISED WATER LINE
1-20	REVISED WATER LINE
1-21	REVISED WATER LINE
1-22	REVISED WATER LINE
1-23	REVISED WATER LINE
1-24	REVISED WATER LINE
1-25	REVISED WATER LINE
1-26	REVISED WATER LINE
1-27	REVISED WATER LINE
1-28	REVISED WATER LINE
1-29	REVISED WATER LINE
1-30	REVISED WATER LINE
1-31	REVISED WATER LINE
1-32	REVISED WATER LINE
1-33	REVISED WATER LINE
1-34	REVISED WATER LINE
1-35	REVISED WATER LINE
1-36	REVISED WATER LINE
1-37	REVISED WATER LINE
1-38	REVISED WATER LINE
1-39	REVISED WATER LINE
1-40	REVISED WATER LINE
1-41	REVISED WATER LINE
1-42	REVISED WATER LINE
1-43	REVISED WATER LINE
1-44	REVISED WATER LINE
1-45	REVISED WATER LINE
1-46	REVISED WATER LINE
1-47	REVISED WATER LINE
1-48	REVISED WATER LINE
1-49	REVISED WATER LINE
1-50	REVISED WATER LINE
1-51	REVISED WATER LINE
1-52	REVISED WATER LINE
1-53	REVISED WATER LINE
1-54	REVISED WATER LINE
1-55	REVISED WATER LINE
1-56	REVISED WATER LINE
1-57	REVISED WATER LINE
1-58	REVISED WATER LINE
1-59	REVISED WATER LINE
1-60	REVISED WATER LINE
1-61	REVISED WATER LINE
1-62	REVISED WATER LINE
1-63	REVISED WATER LINE
1-64	REVISED WATER LINE
1-65	REVISED WATER LINE
1-66	REVISED WATER LINE
1-67	REVISED WATER LINE
1-68	REVISED WATER LINE
1-69	REVISED WATER LINE
1-70	REVISED WATER LINE
1-71	REVISED WATER LINE
1-72	REVISED WATER LINE
1-73	REVISED WATER LINE
1-74	REVISED WATER LINE
1-75	REVISED WATER LINE
1-76	REVISED WATER LINE
1-77	REVISED WATER LINE
1-78	REVISED WATER LINE
1-79	REVISED WATER LINE
1-80	REVISED WATER LINE
1-81	REVISED WATER LINE
1-82	REVISED WATER LINE
1-83	REVISED WATER LINE
1-84	REVISED WATER LINE
1-85	REVISED WATER LINE
1-86	REVISED WATER LINE
1-87	REVISED WATER LINE
1-88	REVISED WATER LINE
1-89	REVISED WATER LINE
1-90	REVISED WATER LINE
1-91	REVISED WATER LINE
1-92	REVISED WATER LINE
1-93	REVISED WATER LINE
1-94	REVISED WATER LINE
1-95	REVISED WATER LINE
1-96	REVISED WATER LINE
1-97	REVISED WATER LINE
1-98	REVISED WATER LINE
1-99	REVISED WATER LINE
1-100	REVISED WATER LINE

4-2-01 APPROXIMATE LOCATION OF WATER AT WELL HOUSE.

PLAN

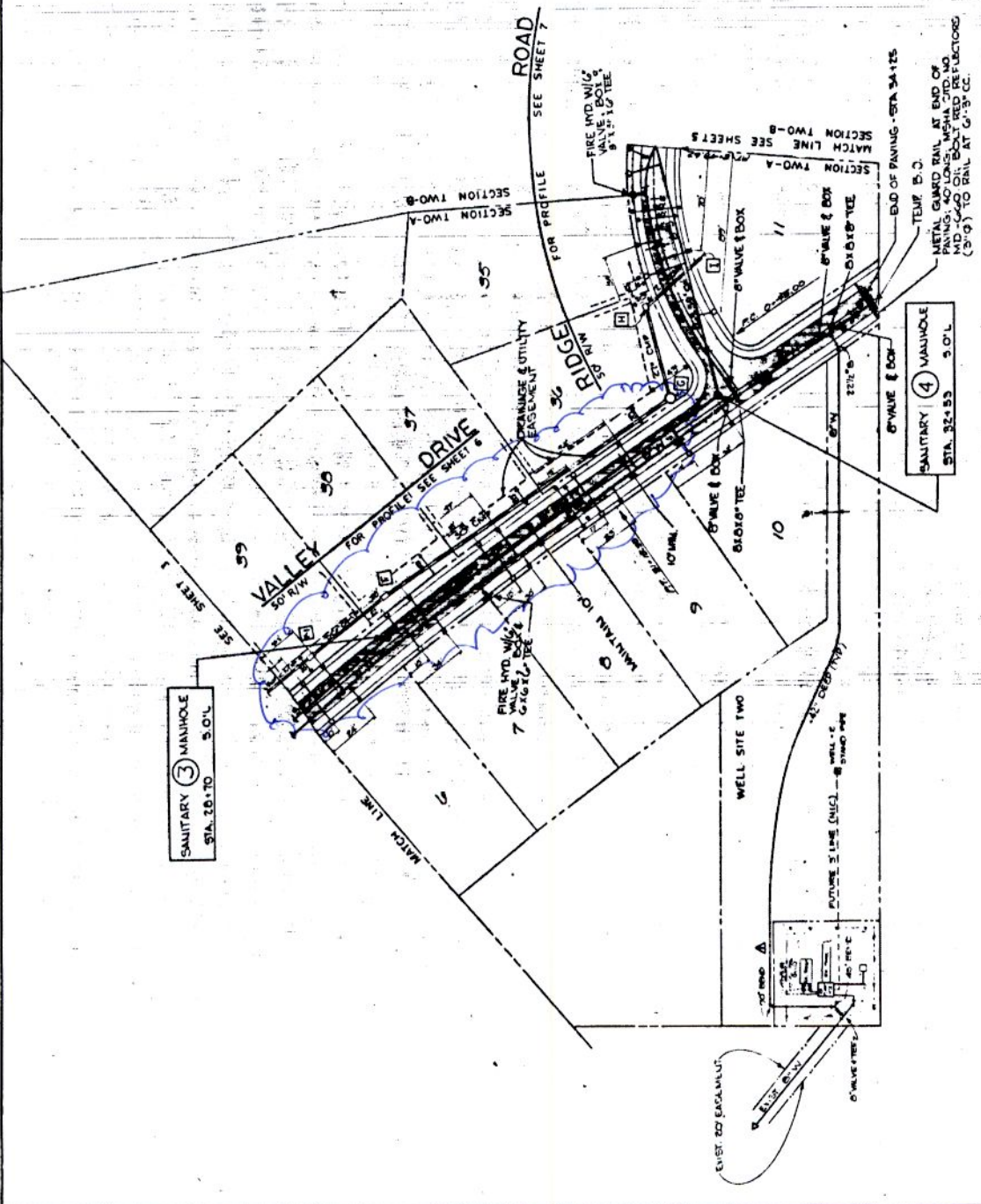
LAUREL BRANCH SUBDIVISION
WHITE PLAINS DISTRICT,
CHARLES COUNTY, MARYLAND

FEDCO SYSTEMS INC.
10805 FT WASHINGTON ROAD
FORT WASHINGTON MARYLAND 20727

24

SA-111 OF 15

AS-BUILT



1-1	1-2	1-3	1-4	1-5	1-6	1-7	1-8	1-9	1-10
ISSUED	REVISED	REVISED	REVISED	REVISED	REVISED	REVISED	REVISED	REVISED	REVISED

LAUREL BRANCH SUBDIVISION
WHITE PLAINS DISTRICT
CHARLES COUNTY, MARYLAND
10905 FT WASHINGTON ROAD

FEDCO SYSTEMS INC.
82-III OF 15

