

In order to manage stormwater runoff pollution, Charles County implemented the **Illicit Discharge Detection and Elimination Program** in 2001. Stormwater runoff is a result of a rain or snow event flowing over impervious surfaces like streets, sidewalks, and parking lots. This **stormwater runoff** conveys pollutants associated with vehicle maintenance, pet waste, lawn care, and litter into the storm drain system leading directly to our local waterways. When materials like used oil, trash juice from dumpsters, chemicals, or other hazardous materials are discharged, intentionally or unintentionally, into the storm water sewer system, this is considered an **illicit discharge**. Charles County is charged with the responsibility to discover, document, and eliminate these sources of stormwater pollution.



## Help Charles County Prevent Stormwater Pollution

### Why is dumpster maintenance important?

Unmaintained dumpsters can...

- **Contaminate** stormwater runoff
- **Pollute** our waterways
- **Hurt** our wildlife
- **Harm** our environment



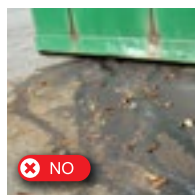
### What do I need to do?

- **Train** employees to close all dumpster lids after every use. Post dumpster maintenance tips.
- **Fix** damaged or broken lids, and replace dumpsters that leak.
- **Sweep** litter into a trash receptacle.
- **Inspect** the area around dumpsters regularly to ensure it is clean.
- **Dispose** of grease and hazardous waste (i.e., oil, batteries, electronics) by using separate containers.



### What should I NOT do?

- **Do not** overfill dumpsters.
- **Do not** dispose of liquids or allow leakage.
- **Do not** pressure wash, hose, or sweep debris or spills into the storm drain.
- **Do not** leave lids open so rainwater can get into the dumpster.
- **Do not** wash the dumpster area with detergents.



**To report a concern about pollutants or possible illegal dumping into the storm drain system, contact the Department of Planning & Growth Management: 301-646-0692**

- **Properly store** potentially hazardous materials, such as grease, paints, detergents, antifreeze, or heavy metals, in appropriate, labeled containers.
- **Ensure** all outdoor containers have lids and are kept closed when not in use.
- **Cover** outdoor work areas and piles of loose materials (i.e., sand, salt) to prevent contaminated runoff from reaching storm drains.
- **Move** any activities which have the potential for pollution indoors.



## Help Charles County Prevent Stormwater Pollution



Pollution Prevention Practices is a publication of the Charles County Watershed Protection & Restoration Program. For additional information, visit online or contact us by phone or email.

301-645-0692 • [PGM@CharlesCountyMD.gov](mailto:PGM@CharlesCountyMD.gov)

[www.CharlesCountyMD.gov/Watershed](http://www.CharlesCountyMD.gov/Watershed)



Charles County Government  
**Department of Planning & Growth Management**  
200 Baltimore Street • La Plata, Maryland 20646  
MD Relay: 711 (TDD: 1-800-735-2258) • Equal Opportunity County