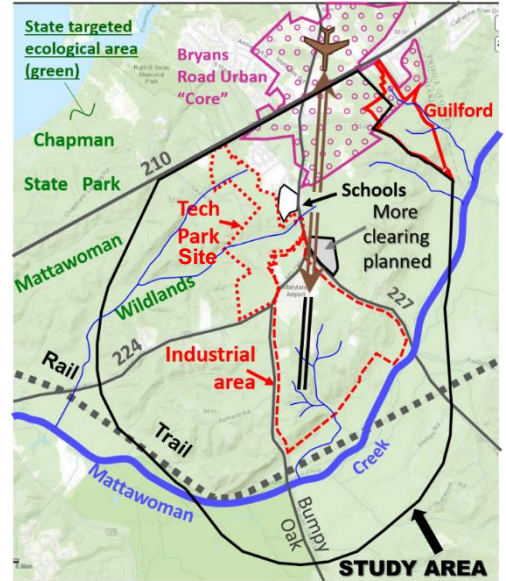


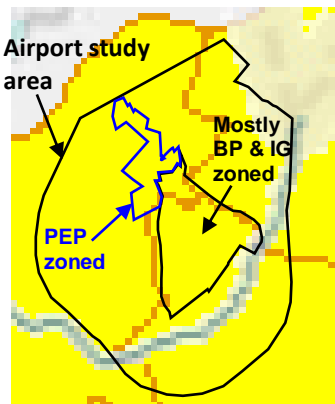
Ecological values in much of the areas that the LUS presently recommends for industrialization around Maryland Airport

Partial list:

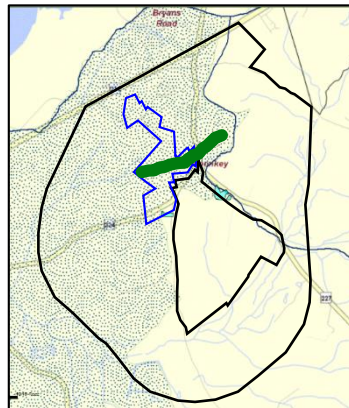
- MD Targeted Ecological Area (green in map)
- MD Stronghold Watershed
- MD Green Infrastructure forest hub
- Audubon Important Bird Area
- Forest Interior Dwellers’ habitat (increasingly rare)
- MD High Priority Water Quality Protection Watersheds
- MD Priority Anadromous Fisheries Watersheds
- MD Sentinel Site Watersheds (watersheds that support high quality, long-term monitoring sites)
- MD Bionet Tiers 1 & 2: Critically or Extremely Significant for biodiversity conservation.
- Stormwater Natural Infrastructure
- Upland Preservation Opportunity
- Mattawoman Stream Valley
- Fish and Wildlife Service Chesapeake Rivers Refuge Complex
- Wetland of Special State Concern (in tech park site)



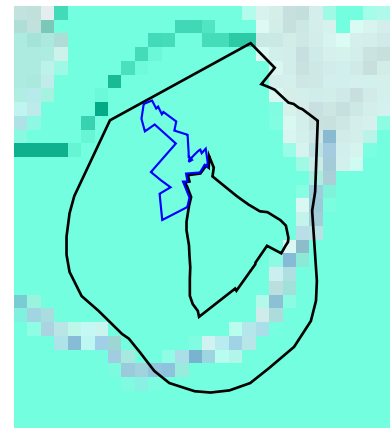
Maps showing approximate relation of various ecological assets to the LUS study area, and the land within it zoned PEP, IG,BP.



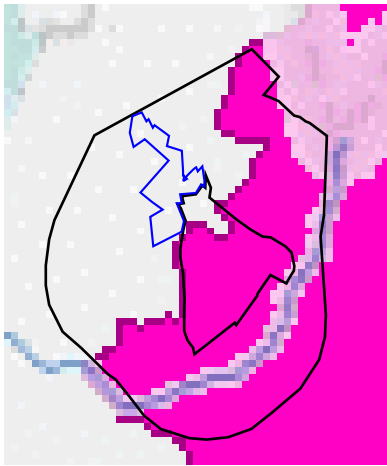
MD High Priority Water Quality Protection Watersheds
Source: Chesapeake Bay Program—MD Healthy Watersheds



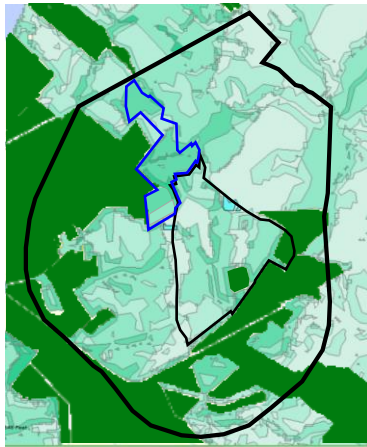
Stronghold Watershed (stippled): “those watersheds that are most important for the protection of Maryland’s aquatic biodiversity”
Wetland of Special Concern (green)
Source: Watershed Resources Registry



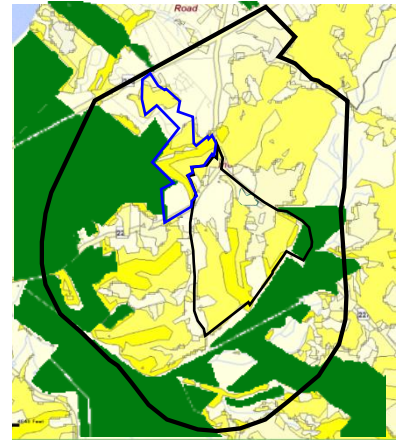
MD Priority Anadromous Fisheries Watersheds
Source: Chesapeake Bay Program—MD Healthy Watersheds



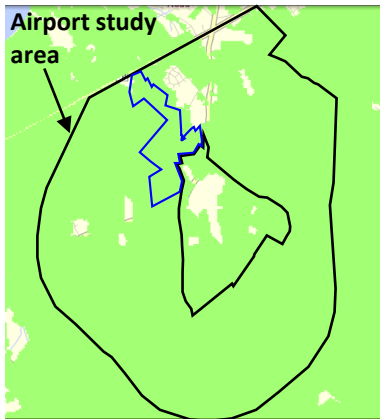
MD Sentinel Watersheds:
 “watersheds that support high quality, long-term monitoring sites”
 Source: Chesapeake Bay Program—MD Healthy Watersheds



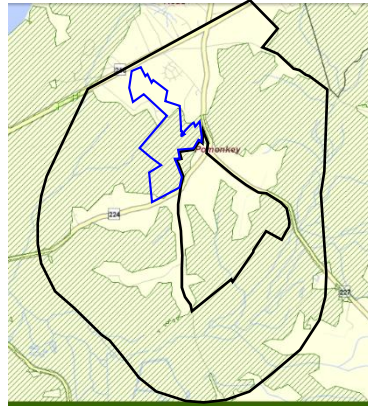
Stormwater Natural Infrastructure
 Source: Watershed Resources Registry
 Dark green: public land



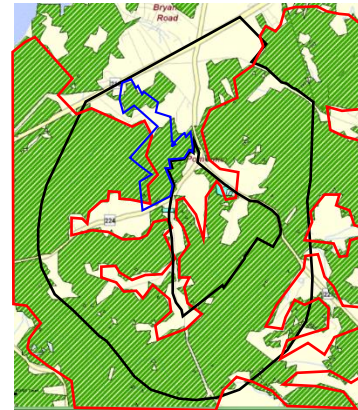
Upland Preservation Opportunity
 Source: Watershed Resources Registry
 Dark green: public land



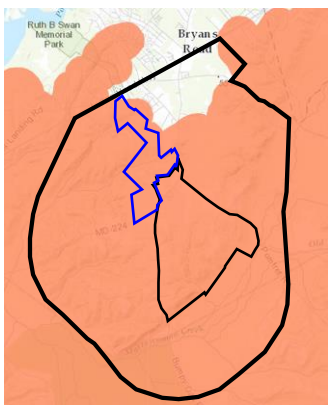
DNR’s Targeted Ecological Area: “rank exceptionally high for ecological criteria and that have a practical potential for preservation.” Source: MERLIN



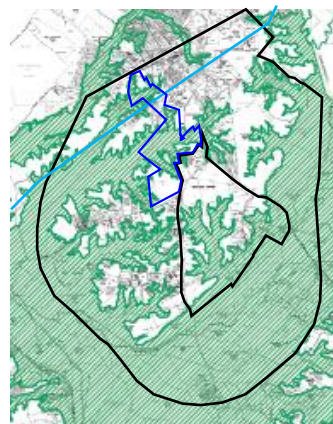
DNR’s Green Infrastructure: Hub & Corridor forest
 Source: MERLIN



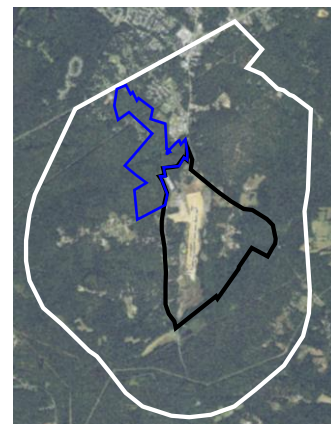
Forest Interior Habitat (green).
 Source: Watershed Resources Registry.
Audubon Important Bird Area (red out line); source: Audubon MD-DC.



Bionet Tiers 1 & 2: Critically or Extremely Significant for biodiversity conservation.



Mattawoman Stream Valley
 The Army Corps of Engineers made its protection a key to the Mattawoman Creek Watershed Management Plan.



Aerial map (2013)