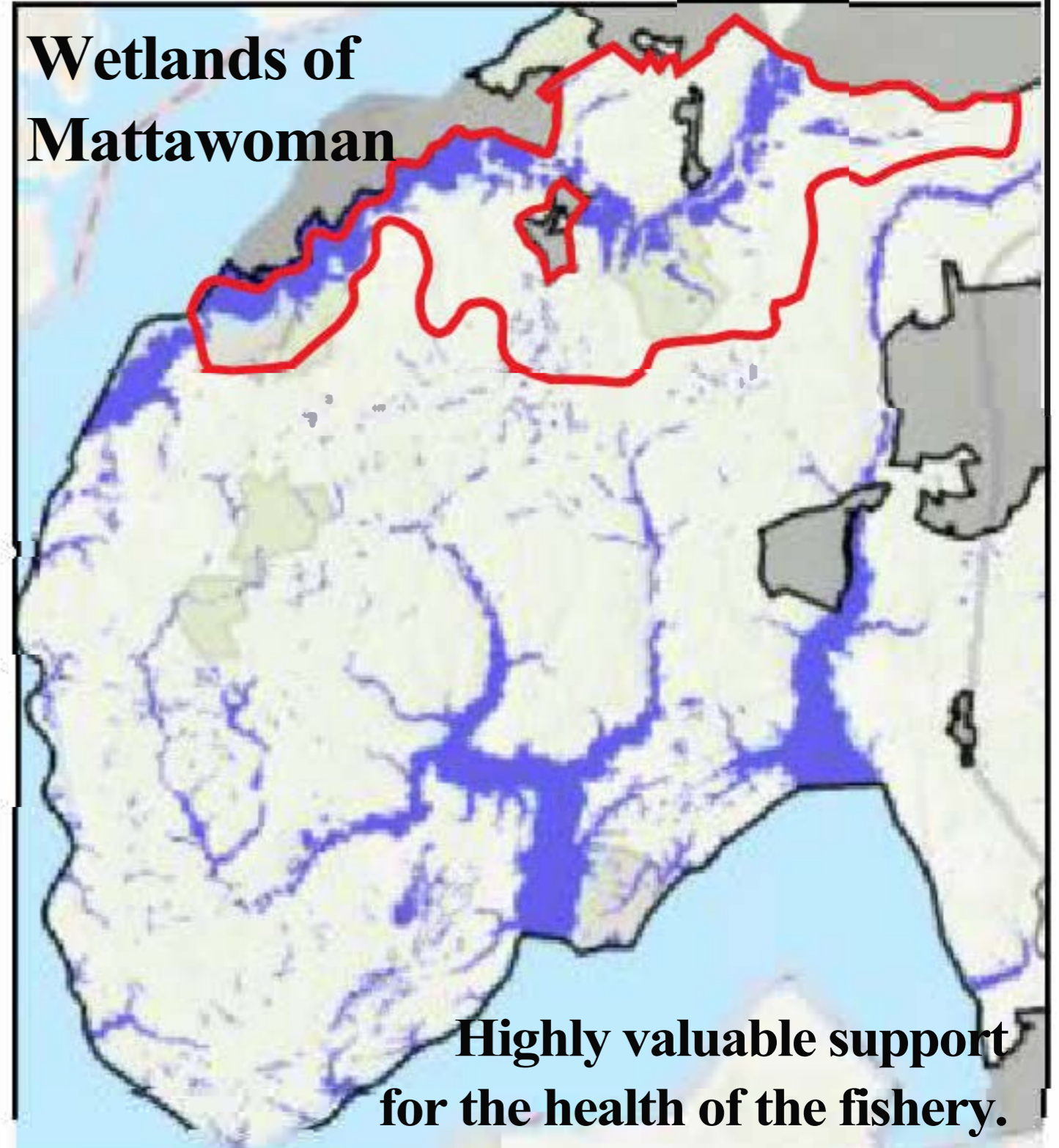


Mattawoman Rural Legacy Area (RLA) Eligibility

The richly deserving Nanjemoy area should be joined by Mattawoman in the RLA nomination.

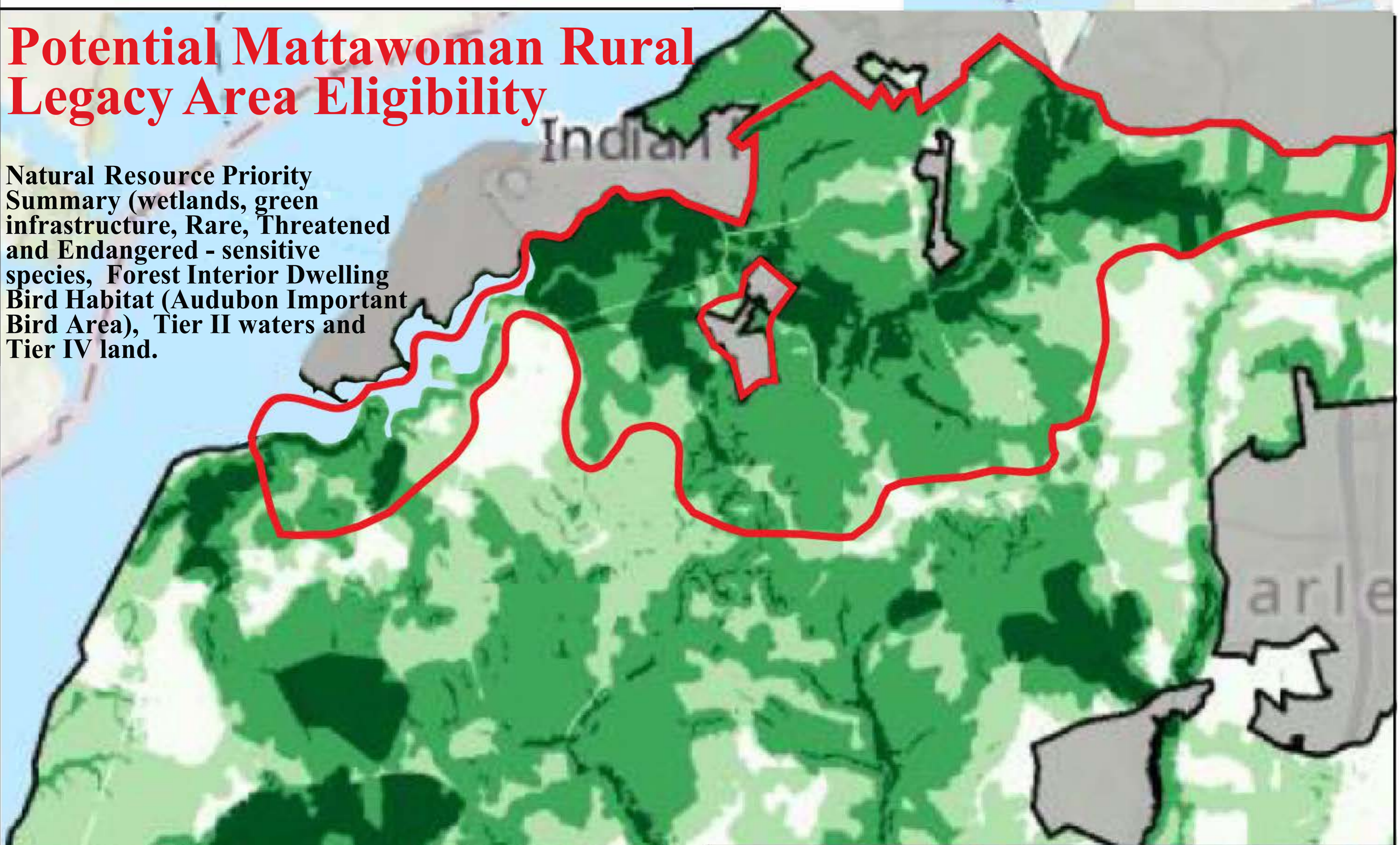
Suitability on any optimized rural legacy model should never undervalue the land's...

- A. ...intricate inter-connectivity with Mattawoman's uniquely valuable fish nursery, the richest in the region. It is vitally important to conserve the biological diversity of Mattawoman fishery & Creek. It is one of the largest & cleanest tributaries of the Potomac River.
- B. ...vulnerability to near-term suburban sprawl: proximity to DC's ever-expanding urbanization... but that same proximity to DC increases the value of conserved resources too, especially the fishery, easily accessible, and just south of our Nation's Capital.
- C. ...percentage of protected lands and public accessibility. Allowing sprawl to envelope already protected lands would squander the significant capital investment made over the decades in Mattawoman wetland and fish habitat protection. Further fragmentation would push the watershed past its tipping point; Mattawoman needs RLA status now.



Potential Mattawoman Rural Legacy Area Eligibility

Natural Resource Priority Summary (wetlands, green infrastructure, Rare, Threatened and Endangered - sensitive species, Forest Interior Dwelling Bird Habitat (Audubon Important Bird Area), Tier II waters and Tier IV land.



Protected Areas

Mattawoman has the highest percentage of protected land in Charles County. This conservation investment highlights the state's effort to protect the high value of Mattawoman Creek & fishery.

